



NESCHEN AMERICAS

2011 PRODUCT CATALOG

EFFECTIVE SEPTEMBER 1, 2011



7091 Troy Hill Drive
Elkridge, MD 21075
USA
Tel: 410-540-8900
Fax: 410-579-8960
www.neschenbrands.com
www.sealbrands.com

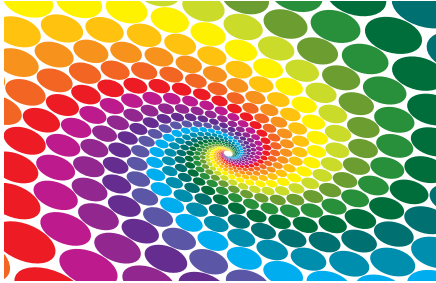


Table of Contents

	Page		Page
Equipment			
Wide Format Laminators	2	Heat-Activated Backing Films	
ProSeal™ Pouch Laminators	3	Stoplight™	9
Equipment Training Fees	4	LightShield™	9
Extended Warranty	4		
Heat-Set Laminating Films			
Print Guard® UV	5	ProSEAL® Pouch Boards & Flexible Pouches	
Floor Guard®	5	ProSEAL® Pouch Boards	10
		ProSEAL® Mounting Boards	10
		ProSEAL® Clear Pouches	10
Heat-Activated Laminating Films			
Jet Guard® UV	5	Neschen Brand Products	
Jet Guard® Crystal Matte	6	SolvoPrint™ Self Adhesive Print Media for Solvent Inks	11
Jet Guard® Deep Crystal	6	INDISPLAY Media Textiles for Water-Based Inks	11, 12
ThermaShield®	6	INDISPLAY Media for Solvent, Latex and UV-Curable Inks	12, 13
		conVerd presented by Neschen	13
		Pure Color™ Media Line	14
		Display Systems	15
		Textile Accessories - Thermcutter and Blade	15
Pressure-Sensitive Laminating Films			
Print Shield® Xtreme UV	6	SolvoTex™ Print Media - Solvent, Latex and UV-Curable Inks - Banner Fabrics	15, 16
Print Shield® Standard UV	7	SolvoTex™ Print Media - Solvent, Latex and UV-Curable Inks - Cottons	16
Print Shield® Base	7	SolvoTex™ Print Media - Solvent and UV-Curable Inks - Blockout Fabrics	16
Print Shield® Anti-Graffiti	7	SolvoTex™ Print Media - Solvent and UV-Curable Inks - Flags	16
Print Shield® Polycarbonate	7	SolvoTex™ Print Media - Solvent and UV-Curable Inks - Special Applications	17
Print Shield® Floor Guard®	8	SolvoTex™ Print Media - Solvent and UV-Curable Inks - PVC Flexface	17, 18
Print Shield® Deep Crystal	8	DirectTex™ Print Media - Dye Sublimation	18
SEAL® Write™	8	Liquid Coating Systems - Water Based	19
		Liquid Coatings - Water-Based	19, 20
		Liquid Coatings - UV	20
Pressure-Sensitive Mounting Adhesives			
Print Mount® Ultra	8	Consumables Special Cut Policy	21
Print Mount® Plus	8	Textile & PVC Special Cut Policy	21
Print Mount® White	8	Terms & Conditions of Sale	21, 22
Print Mount® Delta	8	100% Customer Satisfaction Guarantee	22, 23
Print Mount® DualTemp™	8		
Eco Mount™	9		
Print Mount® Removable	9		
Print Mount 831	9		
OptiMount® Ultra	9		
OptiMount®	9		
gudy® window by SEAL	9		

All prices quoted in U.S. Dollars

NOTE: All SEAL laminates, mounting adhesives and backing films are provided on a 3" core.

Inventory Classification System Key

"@" - 100% in stock guarantee.

"A" – We have finished rolls on the shelves and carry large safety stocks. Our stock of these items can generally be replenished within 24 hours and when these items are replenished, we put large amounts of stock on the shelf.

"B" – Depending on the product, we may or may not have finished rolls on the shelf or safety stocks in place. Call for availability.

"C" - These products are made to order.

* @ABC Class is subject to change without notice.

Wide Format Laminators

Item #	Description
Image 80 Pro Laminator	<p>The SEAL Image 80 Pro is an 80" wide, mono-directional machine compatible with all cold/hot film and substrate applications up to 80" wide and a thickness of 1.5". Built on the very successful 62 Pro design platform, the 80 Pro offers fully adjustable temperature, speed and pressure settings and is ideal for the more experienced finisher requiring a highly versatile laminator.</p> <p>64241 SEAL 80 Pro - 230VAC, ±10%, 39</p>
Image 600md Laminator	<p>The Image 600md is ideal for the professional production finisher who requires the flexibility and efficiency of bi-directional processing. This high-speed, dual heated laminator is capable of processing materials up to 61" wide and a thickness of 1".</p> <p>63600 Image 600md 208- 230VAC, 36 5550 Optional 2nd rear take up system (factory upgrade) 5551 Optional 2nd rear take up system</p>
SEAL 62 Pro D Laminator	<p>The SEAL 62 Pro D features the latest technology and ergonomics. Positioned for production, the 62 Pro D offers dual heated rollers, five un-wind/take up shafts and a revolutionary film saving flip up pull roll system. The 62 Pro is ideal for all hot/cold applications using materials up to 61" wide & 1.5" thick, including high speed, single pass encapsulation up to 10 mil over 10 mil. The 62 Pro D now comes standard with a print roll trough mounted to the front table, an additional bracket to hold a spare auto-grip shaft and a rear nip adjustment handle.</p> <p>64138 SEAL 62 Pro D - 230VAC, 35 64299 * Productivity Package - includes hi-tech Easy In-Feed Table, out- 63297 * Options Package - Easy In-Feed Table (factory installed) * Additional installation fee may apply if done as field upgrade</p>
SEAL 62 Pro S Laminator	<p>The SEAL 62 Pro S features the same advanced lamination technologies of the Pro D, but without the bottom heater or flip up pull roller. Positioned for value, the Pro S offers four un-wind/take up shafts, swing out supply shafts and a slightly shorter cabinet design. The 62 Pro S is ideal for all hot/cold applications using materials up to 61" wide & 1.5" thick. The 62 Pro S now comes standard with a print roll trough mounted to the front table, an additional bracket to hold a spare auto-grip shaft and a rear nip adjustment handle.</p> <p>64296 SEAL 62 Pro S - 230VAC, 16 63298 *Options Package - Easy In-feed *Additional installation fee may apply if done as field upgrade</p>
SEAL 62 Ultra Plus Laminator	<p>The SEAL 62 Ultra Plus will mount and laminate prints up to 61" wide. Its features include a compact design, single control knob for selecting substrate thickness to 1/2" and speeds to 5ft/min. In addition, it offers pre-set temperature controls and pull rollers for single pass encapsulation to 5 mil over 5 mil films.</p> <p>63064 SEAL 62 Ultra Plus - 230VAC, 13</p>
SEAL 62 Ultra S Plus Laminator	<p>The SEAL 62 Ultra S Plus will mount and laminate prints up to 61" wide. Its features include a compact design, single control knob for selecting substrate thickness to 1/2" and speeds to 5 ft/min.</p> <p>63065 SEAL 62 Ultra - 230VAC, 13 Amp,</p>
SEAL 62 Ultra C Plus Laminator	<p>The SEAL 62 Ultra C Plus will mount and laminate prints up to 61" wide. Its features include a compact design, single control knob for selecting substrate thickness to 1/2" and speeds to 10 ft/min.</p> <p>63066 SEAL 62 Ultra - 115VAC, 1 Amp,</p>
SEAL 54 Base Laminator	<p>The SEAL 54 Base will mount and laminate prints up to 55" wide. Its features include a heat assisted top roller, a 2" nip opening, a manual nip adjustment for and 16.4ft/min speed capabilities. The 54 Base now comes standard with a print roll trough mounted to the table and an enhanced take up featuring auto-grip technology.</p> <p>64341 SEAL 54 Base - 115VAC, 15 64619 Roll Trough - Customer Installed</p>
SEAL 62 Base Laminator	<p>The SEAL 62 Base will mount and laminate prints up to 61" wide. Its features include a heat assisted top roller, a 2" nip opening, a manual nip adjustment for precise operation and 16.4ft/min speed capabilities. The 62 Base now comes standard with a print roll trough mounted to the table and an enhanced take up featuring auto-grip technology.</p> <p>64338 SEAL 62 Base - 115VAC, 16 64610 Lower release liner take-up option 64611 Roll-to-roll Option 64614 Roll Trough - Customer Installed</p>
SEAL 54 EL Laminator	<p>The SEAL 54 EL is a cold roll laminator that will mount and laminate prints up to 54" wide. Its features include a heat assisted top roller, a 2" nip opening, a manual nip adjustment for precise operation, 16.4ft/min speed capabilities and a front table roll trough.</p> <p>54545 US/Canada, 115VAC 1 Amp 50/60 Hz 1 Phase NEMA 5-15 plug 5401 Roll Trough- Factory installed 5402 Roll Trough- Customer installed</p>
SEAL 44 Ultra Plus Laminator	<p>Compact and easy to use, the SEAL 44 Ultra Plus is an ideal first laminator for anyone new to image finishing or as a complementary machine to dedicate to a specific application. It is capable of processing materials up to 43" wide and 1/2" thick.</p> <p>63068 SEAL 44 Ultra Plus - 115 VAC,</p>
SEAL 44 Ultra S Plus Laminator	<p>Compact and easy to use, the SEAL 44 Ultra S Plus is an ideal first laminator for anyone new to image finishing or as a complementary machine to dedicate to a specific application. It is capable of processing materials up to 43" wide and 1/2" thick.</p> <p>63069 SEAL 44 Ultra Plus S - 115 VAC,</p>



Pouch Laminator

	Item #	Description
ProSEAL Pouch Laminator		The ProSEAL laminating system offers a low-cost, one-step method of mounting and laminating digital images. Designed for use with ProSEAL Laminating and Mounting Pouch Boards, Flexible Laminating Pouches, Mounting Boards and Mounting Pouches to create rigid or flexible graphics. 44" working width, 155VAC, 60Hz, 12 Amps, 1Phase, NEMA 5-15
	63071	ProSEAL 44 - 115VAC, 60Hz, 12
	63072	Heat Shield Option

Wide Format Laminator Accessories

Image Roll Cleaner	A non-toxic rubber cleaning block for removing adhesive residue from SEAL laminator rollers.	
	350020	4" length



All SEAL laminators are manufactured in the USA at our ISO 9001 certified facility in Sun Prairie, WI.

US Domestic Training Fee Schedule and Service Rates

As part of our training and education program, we offer on-site training by one of our in-house application specialists who provide the highest level of laminator and applicator training from years of hands-on experience.

Equipment Training Fees

MSRP

Dealer

SEAL 54 EL
 SEAL 44 Ultra S Plus
 SEAL 62 Ultra C Plus
 SEAL 62 Ultra S Plus
 SEAL 54 Base
 SEAL 62 Base
 SEAL 62 Pro C
 SEAL 44 Ultra Plus
 SEAL 62 Ultra Plus
 SEAL Image 600MD
 SEAL Image 62 Plus
 SEAL 62 Pro S
 SEAL 62 Pro D
 SEAL 80 Pro
 AccuCoat 1600
 AccuCoat 3300
 AccuCure 60UV, 72XUV, 80 UV

- Training is not included in the purchase price of our machines.
- Training consists of one business day on site between the hours of 8:30am and 5:00pm. Additional days to be billed separately.
- Training includes but is not limited to instruction on the proper usage of the laminator, its safety features and their operation, machine controls and their use, application training, cleaning and maintenance.
- Training does not include unloading, uncrating, or installation of laminator. The machine should already be installed with electrical service checked and live into the machine.
- The owner is responsible for providing all images, substrates, and additional laminates that are not provided with our training fee.
- The training appointment is made 7 - 14 business days after the customer takes delivery of the machine. When the laminator is received by the customer, please contact SEAL Technical Service at 1-800-486-6502 to schedule your training appointment.
- Training is scheduled according to availability of training personnel, site location, the cost and availability of transportation to and from customer site and lodging.
- For expedited training, additional costs may be incurred due to travel availability.
- Fee schedule applies to the US 48 contiguous states only. Call Neschen Americas Technical Service department for quote on trainings outside of the US 48 contiguous states.
- Training fees for Out of Production machines will be billed at our Hourly Service Rates and will include a call charge and all travel expenses if needed.
- For information on uncrating a machine, visit our website www.sealbrands.com to view training videos.

Hourly Service Rates

Call Charge - includes first hour of ground travel

Labor rate per half hour

Travel rate per hour of driving

- Labor and travel rates apply Monday through Friday, 8:30 AM to 5:00 PM excluding holidays.
- Charges for service include the total time engaged in work and/or awaiting access to subject machine.
- Charges for travel include the total time traveling to and from the machine location.
- Labor and travel time is rounded up to the nearest half-hour.
- Travel expenses will be added on Non-Warranty field service calls.

- Prices are in US currency.
- Prices are subject to change.
- Prices are effective as of 04/01/2011.

Extended Warranty Pricing

SEAL Extended Warranty kicks in when the market-leading standard SEAL warranty expires. It provides continuous coverage when mechanical parts occasionally must be replaced and gives you the optimum laminator performance your business needs. NOTE: Extended warranty packages must be purchased prior to the expiration of the original manufacturer warranty.

Model

ProSEAL
 SEAL 54 EL
 SEAL 44 Ultra S Plus
 SEAL 44 Ultra Plus
 SEAL 62 Ultra C Plus
 SEAL 62 Ultra S Plus
 SEAL 62 Ultra Plus
 SEAL 54 Base
 SEAL 62 Base
 SEAL 62 Pro S
 SEAL 62 Pro D
 SEAL Image 600MD
 SEAL 80 Pro

- For more information on our warranty program, please see page 22.

Heat-Set Laminating Films

Item #	Description	A, B, C	Roll Weight
Print Guard UV	Print Guard UV is a family of laminating films that feature superb ultraviolet protection, low activation temperatures (185° F - 195° F) and an aggressive solvent acrylic adhesive. These films are ideal for use on a wide range of medias and display applications. Print Guard UV films can be applied with any SEAL multi-temperature roller laminator.		
Gloss	Provides a brilliant, high gloss finish for maximum visual impact. 2mil (1/1) polyester film.		
2049	38" x 150' (965mm x 45.7m)	A	17 lb
2071	41" x 150' (1.04 x 45.7m)	C	19 lb
2072	51" x 150' (1.29 x 45.7m)	C	23 lb
60277	38" x 25' (965mm x 7.6m)	N/A	8 lb
Luster	Offers a sparkling semi-gloss finish that reduces glare and reflection while adding rich color enhancement. 3mil (2/1) PVC film.		
2073	25" x 150' (635mm x 45.7m)	B	13 lb
1315-3	38" x 150' (965mm x 45.7m)	@	20 lb
1685-3	41" x 150' (1.04 x 45.7m)	B	22 lb
2272	51" x 150' (1.29 x 45.7m)	@	27 lb
2273	51" x 400' (1.29 x 122m)	A	60 lb
60304	38" x 25' (965mm x 7.6m)	N/A	8 lb
Satin Matte	Delivers a soft, moderately-reflective finish that enhances colors while reducing glare for easy viewing. 3mil (2/1) PVC film.		
2074	25" x 150' (635mm x 45.7m)	C	14 lb
1316-3	38" x 150' (965mm x 45.7m)	@	20 lb
1683-3	41" x 150' (1.04 x 45.7m)	B	22 lb
1660	41" x 400' (1.04 x 122m)	B	48 lb
1673	43" x 150' (1.09 x 45.7m)	C	25 lb
1669	43" x 400' (1.09 x 122m)	A	52 lb
2274	51" x 150' (1.29 x 45.7m)	@	26 lb
2278	51" x 400' (1.29 x 122m)	@	61 lb
60316	38" x 25' (965mm x 7.6m)	N/A	8 lb
Ultra Matte	Provides a flat finish that softens images while eliminating glare and reflections. 4mil (3/1) PVC film.		
11056	41" x 328' (1.04 x 100m)	B	49 lb
11238	49" x 328' (1.25 x 100m)	C	56 lb
Floor Guard	Floor Guard is a premium non-slip, heat-activated (200° F) over-laminating film with an aggressive solvent acrylic adhesive specifically designed for the creation of interior floor graphics. It offers a non-reflective textured finish that affords clear viewing while also providing a durable, scuff-resistant, waxable surface. It meets international standards for slip resistance. Constructed from 5mil (4/1) PVC, Floor Guard also doubles as an excellent pop-up display over-laminate for trade show graphics. The textured finish hides and masks finger prints and resists scuffing from rigorous handling of panels.		
2962	38" x 200' (965mm x 61m)	@	35 lb
2961	51" x 200' (1.29 x 61m)	@	45 lb
60324	38" x 25' (965mm x 7.6m)	N/A	10 lb

Heat-Activated Laminating Films

Item #	Description	A, B, C	Roll Weight
Jet Guard UV	A family of premium, low-activation temperature (185° F - 205° F) laminating films that offer high-impact color enhancement, sharp contrast, UV protection and optimum durability.		
Gloss 3mil (1/2) polyester	25" x 250' (635mm x 76m)		
62102	25" x 250' (635mm x 76m)	C	14 lb
62103	38" x 250' (965mm x 76m)	A	20 lb
62104	43" x 250' (1.09 x 76m)	B	23 lb
62105	51" x 250' (1.29 x 76m)	A	26 lb
62106	55" x 250' (1.40 x 76m)	C	28 lb
62107	61" x 250' (1.55 x 76m)	C	32 lb
62101	38" x 25' (965mm x 7.6m)	N/A	8 lb
Gloss 5mil (3/2) polyester	25" x 250' (635mm x 76m)		
62112	25" x 250' (635mm x 76m)	C	21 lb
62113	38" x 250' (965mm x 76m)	A	30 lb
62114	43" x 250' (1.09 x 76m)	A	35 lb
62115	51" x 250' (1.29 x 76m)	A	40 lb
62116	55" x 250' (1.40 x 76m)	C	44 lb
62117	61" x 250' (1.55 x 76m)	C	49 lb
62111	38" x 25' (965mm x 7.6m)	N/A	10 lb
Gloss 10mil (7/3) polyester	25" x 250' (635mm x 76m)		
62122	25" x 250' (635mm x 76m)	C	38 lb
62123	38" x 250' (965mm x 76m)	A	58 lb
62125	51" x 250' (1.29 x 76m)	A	76 lb
62126	55" x 250' (1.40 x 76m)	B	83 lb
62121	38" x 25' (965mm x 7.6m)	N/A	12 lb
Luster 3mil (1/2) polyester	38" x 250' (965mm x 76m)		
62133	38" x 250' (965mm x 76m)	A	20 lb
62134	43" x 250' (1.09 x 76m)	B	24 lb
62135	51" x 250' (1.29 x 76m)	B	27 lb
62131	38" x 25' (965mm x 7.6m)	N/A	8 lb
Matte 3mil (1/2) polyester	25" x 250' (635mm x 76m)		
62142	25" x 250' (635mm x 76m)	C	14 lb
62143	38" x 250' (965mm x 76m)	B	20 lb
62145	51" x 250' (1.29 x 76m)	B	27 lb
62141	38" x 25' (965mm x 7.6m)	N/A	8 lb

Heat-Activated Laminating Films continued...

Item #	Description	A, B, C	Roll Weight
Jet Guard Crystal Matte Ideal for trade show graphics, this film offers a clear matte finish that reduces reflected light and enriches print colors as it protects. 6mil (3.4/2.6) multi-layer film with polyester film.			
4115	38" x 150' (965mm x 45.7m)	B	20 lb
4116	51" x 150' (1.29 x 45.7m)	B	26 lb
62279	54" x 150' (1.37 x 45.7m)	A	26 lb
60283	38" x 25' (965mm x 7.6m)	N/A	8 lb
Jet Guard Deep Crystal Enhances color and protects with a durable, scratch-resistant, textured surface and a satin matte finish. Perfect for pop-up and large display applications. 6mil (3.4/2.6) multi-layer film with polyester core.			
4110	38" x 150' (965mm x 45.7m)	@	19 lb
4111	51" x 150' (1.29 x 45.7m)	@	25 lb
60275	38" x 25' (965mm x 7.6m)	N/A	8 lb
ThermaShield A family of economical, high-activation temperature (185° F - 235° F) laminating films designed to protect and enhance images in a variety of display applications. Ideal for use on any SEAL multi-temperature roller laminator.			
Gloss 1.7mil polyester Offers a crisp, high-polished finish that sharpens colors and creates a brilliant visual impact.			
62402	38" x 500' (965mm x 152m)	B	20 lb
62403	51" x 500' (1.29 x 152m)	B	28 lb
62404	38"x 25' (965mm x 7.6m)	N/A	7 lb
Gloss 3mil (1/2) polyester			
62406	38" x 500' (965mm x 152m)	A	30 lb
62410	43" x 500' (1.09 x 152m)	A	35 lb
62407	51" x 500' (1.29 x 152m)	B	43 lb
62409	38" x 25' (965mm x 7.6m)	N/A	8 lb
Gloss 5mil (2/3) polyester			
62411	38" x 250' (965mm x 76m)	A	29 lb
62415	43" x 250' (1.09 x 76m)	C	33 lb
62412	51" x 250' (1.29 x 76m)	B	38 lb
62414	38"x 25' (965mm x 7.6m)	N/A	8 lb
Gloss 10mil (4/6) polyester			
62416	38" x 250' (965mm x 76m)	A	52 lb
62417	51" x 250' (1.29 x 76m)	B	82 lb
62419	38" x 25' (965mm x 7.6m)	N/A	11 lb
Luster 3mil (1/2) polyester Provides a semi-reflective, sparkling finish which enhances image contrast and reduces glare from direct light.			
62421	38" x 500' (965mm x 152m)	C	30 lb
62422	51" x 500' (1.29 x 152m)	B	43 lb
62424	38" x 25' (965mm x 7.6m)	N/A	8 lb
Matte 3mil (1/2) polyester			
62426	38" x 500' (965mm x 152m)	B	30 lb
62430	43" x 500' (1.09 x 152m)	B	34 lb
62427	51" x 500' (1.29 x 152m)	B	43 lb
62429	38" x 25' (965mm x 7.6m)	N/A	8 lb

Pressure-Sensitive Laminating Films

Item #	Description	A, B, C	Roll Weight
Print Shield Xtreme UV Print Shield Xtreme UV is a premium grade, pressure-sensitive over-laminating film constructed with a 4 mil vinyl base film and a solvent-based acrylic adhesive. This laminate offers protection against UV rays, moisture, dirt and abrasion. Print Shield Xtreme UV has an outdoor durability of three years and an indoor durability of five years.			
Gloss Provides a thin, brilliant finish that boosts color and offers crisp definition. 4mil (3/1) PVC with single paper release liner.			
83103	38" x 200' (965mm x 61m)	C	20 lb
83104	41" x 200' (1.04 x 61m)	C	22 lb
83105	51" x 200' (1.29 x 61m)	C	28 lb
83101	38" x 25' (965mm x 7.6m)	N/A	6 lb
Luster This film deepens and enhances colors, type and lines while maintaining excellent clarity. 4mil (3/1) PVC with single paper release liner.			
83113	38" x 200' (965mm x 61m)	C	20 lb
83114	41" x 200' (1.04 x 61m)	C	22 lb
83115	51" x 200' (1.29 x 61m)	C	22 lb
83116	51" x 400' (1.29 x 122m)	C	28 lb
83111	38" x 25' (965mm x 7.6m)	C	6 lb
Matte A flat, non-reflective finish that yields a softening effect to lines and images. 4mil (3/1) PVC with single paper release liner.			
83123	38" x 200' (965mm x 61m)	C	20 lb
83124	41" x 200' (1.04 x 61m)	C	22 lb
83125	51" x 200' (1.29 x 61m)	C	28 lb
83121	38" x 25' (965mm x 7.6m)	C	6 lb

Pressure-Sensitive Laminating Films continued...

	Item #	Description	A, B, C	Roll Weight
Print Shield Standard UV	Print Shield Standard UV utilizes a water based acrylic adhesive to enhance and protect images while providing a superior bond and good UV protection.			
Gloss	Provides a thick, glossy finish that heightens color and sharpens definition. 3.5mil (2.5/1.0) PVC film with single paper release liner.			
	62203	38" x 200' (965mm x 61m)	B	29 lb
	62204	41" x 200' (1.04 x 61m)	C	31 lb
	62205	51" x 200' (1.29 x 61m)	A	34 lb
	62208	51" x 400' (1.29 x 122m)	C	69 lb
	62231	54" x 200' (1.37 x 61m)	C	36 lb
	62206	61" x 200' (1.55 x 61m)	B	48 lb
	62201	38" x 25' (965mm x 7.6m)	N/A	9 lb
Luster	Enriches color, text and lines while maintaining excellent clarity. 3.5mil (2.5/1.0) PVC with single paper release liner.			
	62212	25" x 200' (635mm x 61m)	C	20 lb
	62213	38" x 200' (965mm x 61m)	@	29 lb
	62214	41" x 200' (1.04 x 61m)	A	31 lb
	62251	43" x 200' (1.09 x 61m)	B	32 lb
	62215	51" x 200' (1.29 x 61m)	@	34 lb
	62218	51" x 400' (1.29 x 122m)	B	69 lb
	62234	54" x 200' (1.37 x 61m)	B	36 lb
	62216	61" x 200' (1.55 x 61m)	B	48 lb
	62217	79" x 164' (2.0 x 50m)	C	61 lb
	62211	38" x 25' (965mm x 7.6m)	N/A	9 lb
Matte	A non-reflective, smooth, clear, flat finish which adds definition and depth. 4.0mil (2.9/1.1) PVC film with single release paper liner.			
	62223	38" x 200' (965mm x 61m)	@	31 lb
	62224	41" x 200' (1.04 x 61m)	B	33 lb
	62225	51" x 200' (1.29 x 61m)	@	37 lb
	62228	51" x 400' (1.29 x 122m)	B	74 lb
	62237	54" x 200' (1.37 x 61m)	B	38 lb
	62226	61" x 200' (1.55 x 61m)	A	50 lb
	62227	79" x 164' (2.01 x 100m)	B	63 lb
	62221	38" x 25' (965mm x 7.6m)	N/A	9 lb
Print Shield Base	Print Shield Base is an economy-grade, PVC over-laminate with water-based acrylic adhesive that provides protection against dirt, abrasion and limited UV. Print Shield Base has an indoor durability of three years and an outdoor durability of one year.			
Gloss	83163	38" x 200' (965mm x 61m)	C	29 lb
	83165	51" x 200' (1.29 x 61m)	C	34 lb
	83167	54" x 150' (1.37 x 45.7m)	C	28 lb
	83168	60" x 150' (1.52 x 61m)	C	36 lb
	83161	38" x 25' (965mm x 7.6m)	C	9 lb
Luster	83173	38" x 200' (965mm x 61m)	C	29 lb
	83175	51" x 200' (1.29 x 61m)	C	34 lb
	83177	54" x 150' (1.37 x 45.7m)	C	28 lb
	83178	60" x 150' (1.52 x 61m)	C	36 lb
	83171	38" x 25' (965mm x 7.6m)	C	9 lb
Matte	83183	38" x 200' (965mm x 61m)	C	29 lb
	83185	51" x 200' (1.29 x 61m)	C	34 lb
	83187	54" x 150' (1.37 x 45.7m)	C	28 lb
	83188	60" x 150' (1.52 x 61m)	C	36 lb
	83181	38" x 25' (965mm x 7.6m)	C	9 lb
Print Shield Anti-Graffiti	1mil high performance PCTFE barrier film with a gloss finish that provides protection for UV and ink-jet prints from a wide variety of stains and chemicals. Although there is no inhibitors in the film to block UV rays, the film itself is UV resistant. This plasticizer and stabilizer free film also offers the highest moisture barrier of any clear, flexible film and is flame resistant.			
	62276	54" x 150' (1.37 x 45.7m)	C	48 lb
	62271	38" x 25' (965mm x 7.6m)	N/A	9 lb
Print Shield Polycarbonate	A high quality pressure-sensitive laminate with the most durability. 5 and 10 mil polycarbonate film with single release paper liner.			
5 mil	62702	38" x 150' (965mm x 45.7m)	C	32 lb
	62703	51" x 150' (1.29 x 45.7m)	C	42 lb
	62701	38" x 25' (965mm x 7.6m)	N/A	9 lb
10 mil	62712	38" x 150' (965mm x 45.7m)	B	47 lb
	62713	51" x 150' (1.29 x 45.7m)	B	63 lb
	62711	38" x 25' (965mm x 7.6m)	N/A	12 lb

Pressure-Sensitive Laminating Films continued...

Item #	Description	A, B, C	Roll Weight
Print Shield Floor Guard	A premium pressure sensitive over-laminating film that features an ultra-aggressive adhesive – perfect for tough-to-stick-to-media such as polyester based white films. It offers a durable, rich-textured finish that is ideal for creating vibrant, slip and scuff resistant floor graphics. Not just for floor graphics: Print Shield Floor Guard is also an excellent choice for protecting trade show graphics and point-of-purchase displays from heavy wear and finger prints.		
62294	38" x 200' (965mm x 61m)	@	32 lb
62297	51" x 200' (1.29 x 61m)	@	41 lb
62300	54" x 150' (1.37 x 45.7m)	C	34 lb
62301	60" x 150' (1.52 x 45.7m)	C	38 lb
62291	38" x 25' (965mm x 7.6m)	N/A	10 lb
Print Shield Deep Crystal	A unique, pressure-sensitive over-laminate with a scratch-resistant, crystal-textured satin finish. Used in conjunction with PS Stoplight, Deep Crystal produces a durable solution for pop-up displays without the use of heat. 6mil (3.4/2.6) multi-layer film with polyester core.		
63016	38" x 200' (965mm x 61m)	A	27 lb
63015	38" x 25' (965mm x 7.6m)	N/A	5 lb
SEAL Write	A glossy, pressure-sensitive polypropylene film that affords high washability, allowing you to turn virtually any image into a write-on/wipe-off chart or display. 2mil (1/1) polypropylene film with single paper release liner.		
2087	38" X100' (965mm x 30.48m)	B	16 lb
2082	38" x 200' (965mm x 61m)	B	22 lb
2088	51" x 100' (1.29 x 30.48m)	B	20 lb
2080	51" x 200' (1.29 x 61m)	A	29 lb
60741	25" x 25' (635mm x 7.6m)	N/A	5 lb

Pressure-Sensitive Mounting Adhesives

Item #	Description	A, B, C	Net Price	Net / Sq Ft	Roll Weight
Print Mount Ultra	Mounts with unsurpassed smoothness! A premium, white adhesive that hides substrate blemishes and conforms to curved surfaces. Excellent for thin media and preventing dark substrates or light from bleeding through. Ideal for use indoors or outdoors. 3mil solvent acrylic adhesive with white polypropylene carrier and single release liner.				
1659	38" x 200' (965mm x 61m)	@			31 lb
1649-9	41" x 200' (1.04 x 61m)	A			35 lb
1658	43" x 200' (1.09 x 61m)	B			36 lb
1649-6	51" x 200' (1.29 x 61m)	@			42 lb
1625	51" x 400' (1.29 x 122m)	@			78 lb
60668	38" x 25' (965mm x 7.6m)	N/A			9 lb
Print Mount Plus	Premium pressure-sensitive adhesive perfect for mounting digital, photographic and reprographic prints to a variety of substrates including cardboard, foam board, wood, and plastic. Provides a strong permanent bond and can be used in both indoor and outdoor applications. 2.75 mil solvent acrylic adhesive with clear polyester carrier and single release paper.				
2344	25" x 200' (635mm x 61m)	C			26 lb
2341	38" x 200' (965mm x 61m)	@			34 lb
1344-1	41" x 200' (1.04 x 61m)	B			32 lb
2333	43" x 200' (1.09 x 61m)	B			41 lb
1347-1	51" x 200' (1.29 x 61m)	@			48 lb
1348	51" x 400' (1.29 x 122m)	B			72 lb
60662	38" x 25' (965mm x 7.6m)	N/A			9 lb
Print Mount White	A high quality, economical, opaque white mounting adhesive designed for pre-coating stable panels and media used for indoor applications. PM White keeps dark substrates from bleeding through, especially when using thin media. 3mil water-based acrylic adhesive with white polypropylene carrier.				
62000	25" x 200' (635mm x 61m)	C			16 lb
62009	31" x 200' (787mm x 61m)	C			20 lb
62001	38" x 200' (965mm x 61m)	@			24 lb
62002	41" x 200' (1.04 x 61m)	B			38 lb
62003	43" x 200' (1.09 x 61m)	B			38 lb
62004	51" x 200' (1.29 x 61m)	@			44 lb
62005	51" x 400' (1.29 x 122m)	@			79 lb
62006	61" x 200' (1.55 x 61m)	A			44 lb
62008	38" x 25' (965mm x 7.6m)	N/A			6 lb
Print Mount Delta	An excellent economical adhesive for digital prints. It has a high initial tack that permanently bonds to both soft and rigid substrates. Ideal for use in indoor and short-term outdoor applications. 2mil pressure-sensitive adhesive with clear polyester carrier and single release liner.				
63160	25" x 200' (635mm x 61m)	A			16 lb
63161	31" x 200' (787mm x 61m)	B			27 lb
63162	38" x 200' (965mm x 61m)	@			32 lb
63163	41" x 200' (1.04 x 61m)	@			36 lb
63164	43" x 200' (1.09 x 61m)	A			39 lb
63165	51" x 200' (1.29 x 61m)	@			42 lb
63166	51" x 400' (1.29 x 122m)	@			81 lb
63168	61" x 200' (1.55 x 61m)	B			48 lb
63170	38" x 25' (965mm x 7.6m)	N/A			8 lb
Print Mount DualTemp	Print Mount® DualTemp™ is a permanent, clear, polyester mounting adhesive that features a 2.0 mil extruded copolymer low-melt adhesive on one side, and a 1.0 mil pressure sensitive acrylic adhesive on the other. A clear polyester liner is used to protect the pressure sensitive adhesive. Economical Print Mount DualTemp allows you to easily create a pressure-sensitive decal and thermally encapsulate your image in one pass through a roller laminator.				
63241	38" x 200' (965mm x 61m)	C			25 lb
63244	51" x 200' (1.29 x 61m)	A			32 lb
63246	38" x 25' (965mm x 7.6m)	N/A			10 lb

Pressure-Sensitive Mounting Adhesives continued...

Item #	Description	A, B, C	Roll Weight
Eco Mount	SEAL Eco Mount is a water-based, polyacrylate, unsupported, pressure-sensitive adhesive that is both recyclable and environmentally degradable. With no carrier film, and a selective chemistry that offers optimum bonding performance while minimizing the impact on paper recycling streams, Eco Mount offers customers a mounting adhesive that can be recycled with corrugated and paper products. And because the cost of a carrier film is not a factor in its manufacturing, Eco Mount is very economical.		
63182	38" x 200' (965mm x 61m)	C	22 lb
63185	51" x 200' (1.29 x 61m)	C	30 lb
63180	38" x 25' (965mm x 7.6m)	N/A	6 lb
Print Mount Removable	A clear, permanent/removable mounting adhesive for all print media. Permanent side bonds firmly to your print while the removable side provides a secure bond to floors or surfaces but allows the graphic to be removed when necessary. 4mil water-based acrylic adhesive with clear PVC carrier and single release liner.		
2977	38" x 200' (965mm x 61m)	B	30 lb
2976	51" x 200' (1.29 x 61m)	A	41 lb
60293	38" x 25' (965mm x 7.6m)	N/A	12 lb
Print Mount 831	This unique adhesive features a long-fiber paper carrier making it ideal for a wide range of applications. Use Print Mount 831 for small, manual applications or for large images that need to be rolled and unrolled. It is also great for mounting irregular media, such as canvas, to rigid substrates. Print Mount has also passed the Photographic Activity Test (PAT), which certifies it as the safest choice for mounting photographs.		
6008500	41" x 164' (1.04 x 50m)	A	24 lb
6008501	51" x 164' (1.29 x 50m)	@	34 lb
S831	38" x 15' (965mm x 4.6m)	N/A	6 lb
OptiMount Ultra	A double-sided, optically clear pressure-sensitive mounting adhesive for face mounting inkjet, photographic, or plain paper media to clear acrylics, plastics and glass. OptiMount features UV absorbers to protect images from fading and creates a permanent bond to both the graphics and substrates. Its acid-free adhesive coating performs flawlessly in vented light box applications. 3mil solvent acrylic adhesive with polyester carrier.		
62064	41" x 100' (1.04 x 30.48m)	C	20 lb
62065	51" x 100' (1.29 x 30.48m)	C	22 lb
62051	31" x 200' (787mm x 61m)	B	27 lb
62052	41" x 200' (1.04 x 61m)	@	35 lb
62053	51" x 200' (1.29 x 61m)	@	44 lb
62054	51" x 400' (1.29 x 122m)	A	84 lb
62062	25" x 25' (635mm x 7.6m)	C	8 lb
OptiMount	A double-sided optically clear permanent pressure-sensitive mounting adhesive for face mounting inkjet, photographic, or plain paper media to clear acrylics, plastics and glass. Optimount creates a permanent bond to both the graphics and substrates and performs very well in vented light box applications. 3 mil aqueous dispersed (water based) adhesive with polyester carrier.		
62072	41" x 200' (1.04 x 61m)	B	35 lb
62073	51" x 200' (1.29 x 61m)	B	44 lb
62074	51" x 400' (1.29 x 122m)	B	84 lb
62076	25" x 25' (635mm x 7.6m)	B	8 lb
gudy window by SEAL	gudy window by SEAL is a water-based mounting adhesive that can be applied to the face of a graphic and then face-mounted on interior windows. Its 1 mil clear polyester carrier has a permanent adhesive on one side and a removable adhesive on the other. It is ideal for bubble-free manual applications and can be easily removed without residue - perfect for store front promotions.		
62081	38" x 100' (965mm x 30.5m)	C	18 lb
62082	38" x 200' (965mm x 61m)	A	32 lb
62083	51" x 100' (1.29 x 30.5m)	C	24 lb
62084	51" x 200' (1.29 x 61m)	A	44 lb
62085	61" x 100' (1.55 x 30.5m)	C	27 lb
62086	61" x 200' (1.55 x 61m)	C	54 lb
62080	38" x 15' (965mm x 4.6m)	N/A	4 lb

Heat-Activated Backing Films

Item #	Description	A, B, C	Roll Weight	
Stoplight	Stoplight is an opaque, white, heat-activated (200° F), flexible polyester-based backing film with an aluminum layer offering rigidity and rollability with excellent lay-flat memory. It is ideal for use in pop-up and panel display applications. Stoplight is available in three thicknesses and consists of a multi-layer film with polyester core.			
Stoplight 115 4.5 mil (3/1.5)	62026	38" x 200' (965mm x 61m)	C	23 lb
	62024	38" x 25' (965mm x 7.6m)	N/A	8 lb
Stoplight 220 9 mil (7/2)	60660	38" x 200' (965mm x 61m)	A	42 lb
	60669	38" x 25' (965mm x 7.6m)	N/A	10 lb
Stoplight 320 12.5 mil (11/1.5)	63021	38" x 200' (965mm x 61m)	A	63 lb
	63020	38" x 25' (965mm x 7.6m)	N/A	10 lb
LightShield™	LightShield is a heat-activated, low melt, white opaque backing film is specially designed for pop-up and display applications that require no back light influence. It features a meatalized, white PET that is more cost effective than Stoplight, yet provides the same 100% opacity needed for any application that you do not want light to show through.			
	63027	38" x 200' (965mm x 61m)	C	58 lb
	63028	51" x 200' (1.29 x 61m)	C	78 lb
	63026	38" x 25' (96.52cm x 7.62m)	N/A	10 lb
	63031	38" x 200' (965mm x 61m)	C	66 lb
	63032	51" x 200' (1.29 x 61m)	C	86 lb
	63030	38" x 25' (96.52cm x 7.62m)	N/A	12 lb



ProSEAL Pouch Boards & Pouches

	Item #	Description	A, B, C	Box Weight
ProSEAL Pouch Boards	Designed to create indoor signs, displays or presentation materials quickly, easily and with minimal waste. Pouch boards produce rigid displays with optimum image enhancement and protection. Each pouch board is manufactured with a rigid, heat-activated adhesive-coated 3/16" foam board with a 5 mil over-laminate attached by a 1/4" adhesive strip across the short edge. 10 Pouch Boards per box.			
Gloss / White	62305	25" x 37" (635mm x 940mm)	A	20 lb
	62306	37" x 49" (940mm x 1245mm)	A	16 lb
	62307	41" x 61" (1025mm x 1525mm)	A	37 lb
Deep Crystal / White	62310	25" x 37" (635mm x 940mm)	A	15 lb
	62311	37" x 49" (940mm x 1245mm)	A	27 lb
	62312	41" x 61" (1025mm x 1525mm)	B	36 lb
Gloss / Black	62320	25" x 37" (635mm x 940mm)	A	14 lb
	62321	37" x 49" (940mm x 1245mm)	B	24 lb
	62322	41" x 61" (1025mm x 1525mm)	B	33 lb
Deep Crystal / Black	62325	25" x 37" (635mm x 940mm)	A	13 lb
	62326	37" x 49" (940mm x 1245mm)	A	24 lb
Pouch Board Sample Box	62302	(4) 8 1/2" x 11" 2 gloss, 2 matte	N/A	1 lb
ProSEAL Mounting Boards	Provides an economical mounting solution for a wide range of media where no protective laminate is required. Excellent for indoor display and presentation materials, each mount board consists of a rigid, heat-activated adhesive-coated 3/16" foam board. 10 Mounting Boards per box.			
White	62340	25" x 37" (635mm x 940mm)	A	15 lb
	62341	37" x 49" (940mm x 1245mm)	A	25 lb
	62342	41" x 61" (1025mm x 1525mm)	B	34 lb
Black	62345	25" x 37" (635mm x 940mm)	B	11 lb
	62346	37" x 49" (940mm x 1245mm)	B	21 lb
	62347	41" x 61" (1025mm x 1525mm)	B	30 lb
ProSEAL Clear Pouches	Designed to create indoor signs, displays or presentation materials where flexibility is a necessity. Pouches consist of 5mil gloss polyester laminate top and bottom. Packs include 25 pouches plus one sled for processing.			
	60659	18.5" x 24.5" (470mm x 622mm)	B	9 lb
	60666	25" x 37" (635mm x 940mm)	A	17 lb
	60679	37" x 49" (940mm x 1245mm)	C	36 lb

Neschen Brand Products

SolvoPrint Self Adhesive Print Media for Solvent Inks

SolvoPrint™ ProGrip This premium white calendered polymeric vinyl is designed for large format graphics on solvent inkjet printers. It is available in a matte finish with permanent or removable adhesive. This product has a five to seven year outdoor durability rating under normal exposure conditions.

Matte, Aqueous Adhesive - Permanent

Item#	Thickness	Roll Size	A,B,C	Roll Weight	Print Side
62773	3.4 mil	54" x 150'	C	30 lb	Image Side OUT
62774	3.4 mil	60" x 150'	C	36 lb	Image Side OUT
62770	3.4 mil	30" x 10'	N/A	5 lb	Image Side OUT

Matte, Aqueous Adhesive - Removable

Item#	Thickness	Roll Size	A,B,C	Roll Weight	Print Side
62783	3.4 mil	54" x 150'	C	30 lb	Image Side OUT
62784	3.4 mil	60" x 150'	C	36 lb	Image Side OUT
62780	3.4 mil	30" x 10'	N/A	5 lb	Image Side OUT

SolvoPrint™

This calendered monomeric vinyl is available in matte and gloss finishes with a permanent or removable adhesive. This product has a three to four year outdoor durability rating under normal exposure conditions. MightyGrip is also available with a gray, permanent adhesive in your choice of gloss or matte finish.

MightyGrip

Gloss, Aqueous Adhesive - Permanent

Item#	Thickness	Roll Size	A,B,C	Roll Weight	Print Side
62893	3.5 mil	54" x 150'	B	49 lb	Image Side OUT
62894	3.5 mill	60" x 150'	B	80 lb	Image Side OUT
62890	3.5 mil	30" x 10'	B	8 lb	Image Side OUT

Matte, Aqueous Adhesive - Permanent

Item#	Thickness	Roll Size	A,B,C	Roll Weight	Print Side
62903	3.5 mil	54" x 150'	B	49 lb	Image Side OUT
62904	3.5 mill	60" x 150'	B	80 lb	Image Side OUT
62900	3.5 mil	30" x 10'	B	8 lb	Image Side OUT

Gloss, Aqueous Adhesive - Removable

Item#	Thickness	Roll Size	A,B,C	Roll Weight	Print Side
62763	3.5 mil	54" x 150'	B	30 lb	Image Side OUT
62764	3.5 mill	60" x 150'	B	36 lb	Image Side OUT
62760	3.5 mil	30" x 10'	N/A	5 lb	Image Side OUT

Matte, Aqueous Adhesive - Removable

Item#	Thickness	Roll Size	A,B,C	Roll Weight	Print Side
62753	3.5 mil	54" x 150'	B	30 lb	Image Side OUT
62754	3.5 mill	60" x 150'	B	36 lb	Image Side OUT
62750	3.5 mil	30" x 10'	N/A		

Gloss, Gray Aqueous Adhesive - Permanent

Item#	Thickness	Roll Size	A,B,C	Roll Weight	Print Side
62933	3.5 mil	54" x 150'	C	49 lb	Image Side OUT
62934	3.5 mil	60" x 150'	C	80 lb	Image Side OUT
62930	3.5 mil	30" x 10'	C	8 lb	Image Side OUT

Matte, Gray Aqueous Adhesive - Permanent

Item#	Thickness	Roll Size	A,B,C	Roll Weight	Print Side
62943	3.5 mil	54" x 150'	C	49 lb	Image Side OUT
62944	3.5 mil	60" x 150'	C	80 lb	Image Side OUT
62940	3.5 mil	30" x 10'	C	8 lb	Image Side OUT

INDISPLAY Media for Water-Based Inks

PrintLux™ Easy Panel 310 CA This rigid PVC media is specially coated to produce excellent print quality with dye and pigment water-based inks. The opaque appearance, plus scratch and water resistance when printed with pigment based inks, make this an ideal choice for banner stands and pop-up displays. Its NFPA 701 certification allows for use at trade shows and other public venues.

Item#	Thickness	Roll Size	A,B,C	Roll Weight	Print Side
6025070	12 mil	36" x 65'	C	22 lb	Image Side OUT
60076	12 mil	30" x 10'	N/A	7 lb	Image Side OUT

PrintLux™ Easy Panel 430 CA This rigid PVC media is specially coated to produce excellent print quality with dye and pigment water-based inks. The opaque appearance, plus scratch and water resistance when printed with pigment based inks, make this an ideal choice for banner stands and pop-up displays. Its NFPA 701 certification allows for use at trade shows and other public venues.

Item#	Thickness	Roll Size	A,B,C	Roll Weight	Print Side
6025067	17 mil	36" x 65'	C	28 lb	Image Side OUT
6025069	17 mil	42" x 65'	C	33 lb	Image Side OUT
60078	17 mil	30" x 10'	N/A	7 lb	Image Side OUT

INDISPLAY Media for Water-Based and Latex Inks - Banner Fabrics

Printex™ Easy Banner Light This polyester fabric base is coated with an inkjet surface coating that supports latex, aqueous dye and pigment based inks. It offers excellent color reproduction and performance in hanging banner and roll up banner stands. It works best for light to medium duty, as well as in backlit applications. The edges can be cut without fraying, plus there is no edge curl. Supplied on a 2" core.

Item#	Weight	Roll Size	A,B,C	Roll Weight	Print Side
6024514	4.9 oz / yd2	36" x 150'	C	14 lb	Image Side OUT
6024516	4.9 oz / yd2	50" x 150'	C	18 lb	Image Side OUT
6024518	4.9 oz / yd2	60" x 150'	C	22 lb	Image Side OUT
6024513	4.9 oz / yd2	30"x 10'	N/A	6 lb	Image Side OUT

Printex™ Easy Banner Heavy This polyester fabric base is coated with an inkjet surface coating that supports aqueous dye and pigment based inks. It offers excellent color reproduction and performance in hanging banner and roll up banner stands. This media offers both opacity and durability. Finishing is a snap, the edges can be cut without fraying- plus there is no edge curl. Supplied on a 2" core.

Item#	Weight	Roll Size	A,B,C	Roll Weight	Print Side
6024519	7.1 oz / yd2	36" x 98'	B	14 lb	Image Side OUT
6024520	7.1 oz / yd2	42" x 98'	B	16 lb	Image Side OUT
6024521	7.1 oz / yd2	50" x 98'	C	20 lb	Image Side OUT
6024523	7.1 oz / yd2	60" x 98'	C	24 lb	Image Side OUT
6024524	7.1 oz / yd2	30" x 10'	N/A	6 lb	Image Side OUT

VariTex™ DecoFrame 250 CA VariTex™ DecoFrame 250 CA is a 100% polyester knitted fabric. It has a moderate stretch and good wrinkle resistance, which makes it perfect for trade show display systems. Recommended for indoor use. For use with latex, uv-curable, aqueous pigment and dye sublimation water based inks.

Item#	Weight	Roll Size	A,B,C	Roll Weight	Print Side
6024212	8.26 oz/yd2	41" x 98'	C	25 lb	Image Side IN
6024213	8.26 oz/yd2	60" x 98'	C	30 lb	Image Side IN
60130	8.26 oz/yd2	30" x 23'	N/A	10 lb	Image Side IN

INDISPLAY Media for Solvent, Latex and UV-Curable Inks

SolvoPrint™ Nolite 165 SolvoPrint™ Nolite 165 is a 6.5 mil polyester media with a matte inkjet coating. It contains a light-blocking layer for 100% opacity. It works well with a variety of banner and display applications, including roll up banner stands and for trade show and POP graphics.

Item#	Thickness	Roll Size	A,B,C	Roll Weight	Print Side
6031864	6.5 mil	36" x 98'	C	16 lb	Image Side OUT
60129	6.5 mil	30" x 10'	N/A	6 lb	Image Side OUT

SolvoPrint™ Nolite 175 CA SolvoPrint Nolite 175 is a matte polyester media with an inkjet coating for solvent, eco-solvent, latex and UV-curable printers. This product contains an integrated light-blocking layer for 100% opacity. It is suitable for indoor use, as well as short-term outdoor use, and works well with a variety of banner and display applications. It pairs with the Expolinc display hardware, specifically the Roll Up, 4 Screen and Pole System. Its stiff construction and non-curling edges make this product an excellent choice for hanging display systems, and its scratch-resistant coating maintains message clarity and attractiveness.

Item#	Thickness	Roll Size	A,B,C	Roll Weight	Print Side
6029152	7 mil	36" x 98'	C	18 lb	Image Side OUT
60120	7 mil	30" x 10'	C	8 lb	Image Side OUT

SolvoPrint™ Nolite 360 This 14 mil product contains an integrated light-blocking layer for 100% opacity making it suitable for indoor use and short-term outdoor use with a wide variety of banner and display applications. Its stiff construction and non-curling edges makes Nolite 360 an excellent choice for hanging display systems.

Item#	Thickness	Roll Size	A,B,C	Roll Weight	Print Side
6031860	14 mil	36" x 66'	C	25 lb	Image Side OUT
6031862	14 mil	60" x 66'	C	35 lb	Image Side OUT
60128	14 mil	30" x 10'	N/A	7 lb	Image Side OUT

SolvoPrint™ PP Banner 210 SolvoPrint™ PP Banner 210 is a cost-effective solution for POP and trade show graphics. Use this 8 mil polypropylene film in Roll Up and 4 Screen display systems. PP Banner has a matte, scratch resistant inkjet coating as well as a silver backing which provides opacity.

Item#	Thickness	Roll Size	A,B,C	Roll Weight	Print Side
6031852	8.3 mil	36" x 98'	C	23 lb	Image Side OUT
6031854	8.3 mil	60" x 98'	C	32 lb	Image Side OUT
60126	8.3 mil	30" x 10'	N/A	9 lb	Image Side OUT

SolvoPrint™ Easy Panel 220 SolvoPrint Easy Panel 220 is for use with solvent, eco-solvent and UV inks. Easy Panel 220 is a rigid PVC media with a special inkjet coating to produce excellent print quality and strong color vibrancy. It has an opaque appearance, but is not completely light-blocking, and is also scratch and water resistant. Easy Panel 220 is an ideal choice for printing trade show graphics and is compatible with the Expolinc Roll-up Classic, Roll-up Professional and Pop-up display systems. Neschen recommends over-laminating this product for added durability and protection.

Item#	Thickness	Roll Size	A,B,C	Roll Weight	Print Side
6026976	8.66 mil	36" x 100'	C	18 lb	Image Side OUT
6026977	8.66 mil	54" x 100'	C	27 lb	Image Side OUT
60109	8.66 mil	30" x 10'	C	8 lb	Image Side OUT

SolvoPrint™ Easy Panel 310 CA This rigid PVC media is specially coated to produce excellent print quality with solvent, eco-solvent and UV inks. The opaque appearance, plus scratch and water resistance when printed with pigment based inks, make this an ideal choice for banner stands and pop-up displays. Its NFPA 701 certification allows for use at trade shows and other public venues.

Item#	Thickness	Roll Size	A,B,C	Roll Weight	Print Side
6026982	12 mil	36" x 65'	C	22 lb	Image Side OUT
6026983	12 mil	42" x 65'	C	26 lb	Image Side OUT
60070	12 mil	30" x 10'	N/A	6 lb	Image Side OUT

INDISPLAY Media for Solvent, Latex and UV-Curable Inks continued...

SolvoPrint™ Easy Panel 430 CA This rigid PVC media is specially coated to produce excellent print quality with solvent, eco-solvent and UV inks. The opaque appearance, plus scratch and water resistance when printed with pigment based inks, make this an ideal choice for banner stands and pop-up displays. Its NFPA 701 certification allows for use at trade shows and other public venues.

Item#	Thickness	Roll Size	A,B,C	Roll Weight	Print Side
6026980	17 mil	36" x 65'	C	28 lb	Image Side OUT
6026981	17 mil	42" x 65'	C	33 lb	Image Side OUT
60071	17 mil	30" x 10'	N/A	7 lb	Image Side OUT

SolvoPrint™ Paper 240 Satin This bright white, photo paper is designed for use with solvent, eco-solvent and UV inks. It produces vibrantly-colored photorealistic images for use with photo prints, posters and trade show graphics. We recommend encapsulation for indoor and short-term outdoor display graphics.

Item#	Thickness	Roll Size	A,B,C	Roll Weight	Print Side
6030138	9.6 mil	50" x 164'	C	38 lb	Image Side OUT
6025065	9.6 mil	54" x 164'	C	42 lb	Image Side OUT
6025066	9.6 mil	60" x 164'	C	47 lb	Image Side OUT
60073	9.6 mil	30" x 10'	N/A	6 lb	Image Side OUT

SolvoPrint™ Daytona PVC Banner SolvoPrint Daytona PVC Banner is a PVC product perfect for cost-effective messaging. Ideal for frontlit banners and displays, it can be used both indoors and outdoors for up to one year.

Item#	Weight	Roll Size	A,B,C	Roll Weight	Print Side
6081421	13 oz / yd2	38" x 164'	C	54 lb	Image Side IN
6081422	13 oz / yd2	54" x 164'	C	79 lb	Image Side IN
6081423	13 oz / yd2	61" x 164'	C	85 lb	Image Side IN
60115	13 oz / yd2	30" x 10'	N/A	6 lb	Image Side IN

SolvoPrint™ Gotham PVC Blockout SolvoPrint Gotham PVC Blockout is a PVC that is 100% opaque and provides total protection from light washout. Its blockout properties also allow it to be double-side printed. Its smooth surface, bright white point and curl resistant edges enhance your messaging. Gotham PVC Blockout is also durable outdoors.

Item#	Weight	Roll Size	A,B,C	Roll Weight	Print Side
6081441	13 oz / yd2	38" x 131'	C	53 lb	Image Side IN
6081442	13 oz / yd2	54" x 131'	C	78 lb	Image Side IN
6081443	13 oz / yd2	63" x 131'	C	83 lb	Image Side IN
60116	13 oz / yd2	30" x 10'	N/A	6 lb	Image Side IN



conVerd Presented by Neschen - FSC certified paper products

conVerd EnviroScape Mural™ Plus! EnviroScape Mural Plus! is a high performance, dimensionally stable wall covering material that breathes. It is easy to install and can be easily removed from walls, windows or virtually any media with a rigid surface. It is compatible with solvent, latex and UV-curable ink printers.

Item#	Thickness	Roll Size	A,B,C	Roll Weight	Print Side
6073042	6 mil	42" x 150'	C	24 lb	Image Side OUT
6073043	6 mil	54" x 150'	C	31 lb	Image Side OUT
6073045	6 mil	60' x 150'	C	34 lb	Image Side OUT
6073040	6 mil	30" x 23'	N/A	5 lb	Image Side OUT

conVerd Blox-Lite™ (Original Coating) Blox-Lite™ is a 100% opaque, two-sided media alternative which can be imaged on both sides with no view through and is available in 10 and 14 mil thicknesses. Blox-Lite is an ideal environmentally-conscious replacement for indoor PVC banners. **INK COMPATIBILITY: Latex, UV-curable and full solvent inks (in grand format printers).**

Item#	Thickness	Roll Size	A,B,C	Roll Weight	Print Side
6073013	10 mil	54" x 150'	C	47 lb	Image Side OUT
6073014	10 mil	54" x 300'	C	91 lb	Image Side OUT
6073015	10 mil	60" x 150'	C	52 lb	Image Side OUT
6073010	10 mil	30" x 23'	C	7 lb	Image Side OUT
6073023	14 mil	54" x 150'	C	56 lb	Image Side OUT
6073024	14 mil	54" x 300'	C	109 lb	Image Side OUT
6073025	14 mil	60" x 150'	C	62 lb	Image Side OUT
6073020	14 mil	30" x 23'	C	8 lb	Image Side OUT

conVerd Blox-Lite™ (Universal Coating) Blox-Lite™ is a 100% opaque, two-sided media alternative which can be imaged on both sides with no view through and is available in 10 and 14 mil thicknesses. Blox-Lite is an ideal environmentally-conscious replacement for indoor PVC banners. **INK COMPATIBILITY: Solvent, Eco-Solvent, Latex and UV-curable inks.**

Item#	Thickness	Roll Size	A,B,C	Roll Weight	Print Side
6073073	10 mil	54" x 150'	C	47 lb	Image Side OUT
6073074	10 mil	54" x 300'	C	91 lb	Image Side OUT
6073075	10 mil	60" x 150'	C	52 lb	Image Side OUT
6073070	10 mil	30" x 23'	C	7 lb	Image Side OUT
6073083	14 mil	54" x 150'	C	56 lb	Image Side OUT
6073084	14 mil	54" x 300'	C	109 lb	Image Side OUT
6073085	14 mil	60" x 150'	C	62 lb	Image Side OUT
6073080	14 mil	30" x 23'	C	8 lb	Image Side OUT

conVerd GreenLight™ Plus! GreenLight™ Plus! is the most popular backlit poster paper in North America. GreenLight Plus! is JCDecaux approved for outdoor transit signage. Its bright white finish and ultra-uniform fiber distribution provide for maximum color pop not only when backlit, but also when front lit (during the day). Available for latex ink and UV curable ink printers.

Item#	Thickness	Roll Size	A,B,C	Roll Weight	Print Side
6073033	8 mil	54" x 150'	C	30 lb	Image Side OUT
6073034	8 mil	54" x 300'	C	57 lb	Image Side OUT
6073035	8 mil	60" x 150'	C	33 lb	Image Side OUT
6073030	8 mil	30" x 23'	C	5 lb	Image Side OUT

Pure Color™ Media Line

Pure Color™ Golden Gate Fabric

Golden Gate is a polyester fabric coated with PVC that is perfect for making the transition from printing on PVC banners to a more sophisticated textile. It offers the look and feel of a textile with the printing ease of PVC. This rugged indoor or outdoor product has an anti-fungal treatment that is ideal for use in damp environments and longer-term outdoor signage. It is also NFPA 701 fire rated – making it ideal for store signage, roll up and screen displays, murals, trade show graphics and POP displays in any public area. Golden Gate fabric will reproduce brilliant colors with most solvent, eco-solvent and latex printers in the market.

Item#	Weight	Roll Size	A,B,C	Roll Weight	Print Side
6318002	8 oz/yd2	42" x 164' (1.07 m x 50 m)	C	38 lb	Image Side IN
6318003	8 oz/yd2	54" x 164' (1.37 m x 50 m)	C	49 lb	Image Side IN
6318004	8 oz/yd2	61" x 164' (1.55 m x 50 m)	C	54 lb	Image Side IN
6318005	8 oz/yd2	71" x 164' (1.80 m x 50 m)	C	62 lb	Image Side IN
6318006	8 oz/yd2	80" x 164' (2.05 m x 50 m)	C	70 lb	Image Side IN
6318008	8 oz/yd2	98" x 164' (2.50 m x 50 m)	C	84 lb	Image Side IN
6318001	8 oz/yd2	20" x 10' (0.50 m x 3 m)	N/A	4 lb	Image Side OUT

Pure Color™ VersaFabric™

VersaFabric, a 100% polyester fabric with a specialty coating, is one of the most versatile fabrics on the market today. It is perfect for both indoor and outdoor applications where color, wrinkle resistance and drape are important. VersaFabric provides sharp image reproduction and brilliant color finish for dramatic trade show roll-up, pop-up and soft image displays, store signage, murals, POP displays, tent sides and theatrical backdrops. Plus, its NFPA 701 fire rating allows it to be used in public areas. This fabric is performance designed for use with most solvent, eco-solvent, latex and UV cure printers on the market.

Item#	Weight	Roll Size	A,B,C	Roll Weight	Print Side
6318032	7.1 oz/yd2	41" x 82' (1.05 m x 25 m)	C	9 lb	Image Side OUT
6318033	7.1 oz/yd2	54" x 82' (1.37 m x 25 m)	C	45 lb	Image Side OUT
6318034	7.1 oz/yd2	61" x 82' (1.55 m x 25 m)	C	51 lb	Image Side OUT
6318035	7.1 oz/yd2	80" x 164' (2.05 m x 50 m)	C	65 lb	Image Side OUT
6318036	7.1 oz/yd2	98" x 164' (2.50 m x 50 m)	C	80 lb	Image Side IN
6318011	7.1 oz/yd2	20" x 10' (0.50 m x 3 m)	N/A	3 lb	Image Side OUT

Pure Color™ Monet Canvas

Monet is a heavyweight 10 oz/yd2 coated canvas with a prominent tooth that is ideal for giclée art reproductions, as well as for eye-catching POP signage, trade show graphics and store signage. This strong, yet flexible, canvas features a uniform satin texture and its specialized coating allows for vibrant, photorealistic printing with a wide color gamut. Designed for use with most solvent, eco-solvent, latex and UV printers on the market, Monet's tight weave also allows it to be used with vacuum-carried flat bed UV printers.

Item#	Weight	Roll Size	A,B,C	Roll Weight	Print Side
6318022	10 oz/yd2	54" x 82' (1.37 m x 25 m)	C	39 lb	Image Side OUT
6318023	10 oz/yd2	61" x 82' (1.55 m x 25 m)	C	43 lb	Image Side OUT
6318021	10 oz/yd2	20" x 10' (0.50 m x 3 m)	N/A	3 lb	Image Side OUT

Pure Color™ Mambo Fabric

Mambo is a 100% polyester fabric featuring a unique coating that provides for the highest color brilliance and the deepest, richest blacks. Its distinctive characteristics make it ideal for a wide variety of indoor and outdoor displays where the look and feel of fabric will enhance and add depth to the image. It will make a splash with store signage, backlit displays, murals, trade show graphics, POP displays, tent sides, and theatrical backdrops using Mambo fabric. This product is designed for printing with most solvent, eco-solvent and latex printers on the market.

Item#	Weight	Roll Size	A,B,C	Roll Weight	Print Side
6318044	9 oz/yd2	42" x 82' (1.07 m x 25 m)	C	21 lb	Image Side OUT
6318042	9 oz/yd2	54" x 82' (1.37 m x 25 m)	C	27 lb	Image Side OUT
6318043	9 oz/yd2	61" x 82' (1.55 m x 25 m)	C	30 lb	Image Side OUT
6318041	9 oz/yd2	20" x 10' (0.50 m x 3 m)	N/A	3 lb	Image Side OUT

Pure Color™ Calypso Breeze Satin

Calypso Breeze is a lightweight translucent satin polyester fabric. It features a specialty coating that delivers photo realistic imaging with a wide color gamut, fast dry time and excellent scratch resistance. The satin finish provides a distinctive look that is ideal for use in backlit displays, roll-up displays and window graphics- anywhere eye-catching visuals are required. Calypso Breeze is designed for use with most solvent, eco solvent and UV printers in the market.

Item#	Weight	Roll Size	A,B,C	Roll Weight	Print Side
6318052	3.5 oz/yd2	54" x 100' (1.37 m x 30.5 m)	C	24 lb	Image Side OUT
6318053	3.5 oz/yd2	60" x 100' (1.55 m x 30.5 m)	C	27 lb	Image Side OUT
6318051	3.5 oz/yd2	20" x 10' (0.50 m x 3 m)	N/A	3 lb	Image Side OUT

Pure Color™ Apollo Flag™

Apollo Flag is a lightweight polyester flag that is perfect for use with any flag system, plus it features a paper backing that allows it to be printed without the use of a mesh printing kit. For bright colors with great bleed through, this is the product of choice. Apollo Flag makes dramatic messaging for indoor and outdoor applications easy. It is designed for use with most solvent, eco-solvent, latex and UV printers in the market.

Item#	Weight	Roll Size	A,B,C	Roll Weight	Print Side
6023891	3.2 oz/yd2	42" x 100' (1.07 m x 30.5 m)	C	19 lb	Image Side OUT
6023892	3.2 oz/yd2	54" x 100' (1.37 m x 30.5 m)	C	23 lb	Image Side OUT
6023893	3.2 oz/yd2	64" x 100' (1.63 m x 30.5 m)	C	27 lb	Image Side OUT
6023890	3.2 oz/yd2	20" x 10' (0.50 m x 3 m)	N/A	3 lb	Image Side OUT

Display Systems

Roll Up With many competing roll ups on the market, it's the little things that make the difference. The Roll Up adds reinforced fitting for the pole to ensure the display stands straight up - no tilting or leaning. The top panel profile clamps your media securely in place, without the need for adhesive strips and the pole attaches to the top panel from behind, no unsightly hook hanging on the top of your graphic! The carrying bag unzips length wise for greater ease and has extra padding over its entire length to ensure your display stays looking great!

Item#	Weight	Width	Quantity*	A,B,C
4001270	6.8 lbs	33"	6 units/package	C
4001271	7.7 lbs	39"	6 units/package	C

L-Banner The L-Banner has a solid, weighted foot and the support pole screws in and holds tight, for added stability. Our panel profiles clamp securely without using adhesive and the pole attaches cleanly behind the profile, providing a clean, elegant look. The carrying bag includes a PVC inner core for maximum durability and protection for your stand and graphic.

Item#	Weight	Width	Quantity*	A,B,C
4001274	7.7 lbs	33"	6 units/package	C
4001275	8.2 lbs	39"	6 units/package	C

*Available only in packages of 6 stands

Textile Accessories

Thermocutter and Blade When using any Neschen inkjet media, it is important to finish it properly. Many of our textiles, require no finishing and will not fray if simply cut with textile scissors or a knife. Others should have their edges either sewn under or heat knifed. A heat knife is a great way to get a clean, straight edge and works by simultaneously cutting and melting the fibers at the edge of the textile. The Thermocutter is not recommended for use with natural fibers such as cotton.

Item#	Description
600HSG0	Knife: 110v 60 Hz (does not include blade)
600H205	Blade: Type R Blade - Heatcutter

Knife and Blade sold separately

Digital Print Media - Solvent, Latex and UV-Curable Inks - Banner Fabrics

VariTex™ DecoFrame 250 CA VariTex™ DecoFrame 250 CA is a 100% polyester knitted fabric. It has a moderate stretch and good wrinkle resistance, which makes it perfect for trade show display systems. Recommended for indoor use. For use with latex, uv-curable, aqueous pigment and dye sublimation water based inks.

Item#	Weight	Roll Size*	A,B,C	Roll Weight	Print Side
6024212	8.26 oz/yd2	41" x 98' (1.03m x 30m)	C	25 lb	Image Side IN
6024213	8.26 oz/yd2	60" x 98' (1.52m x 30m)	C	30 lb	Image Side IN
6024215	8.26 oz/yd2	98" x 164' (2.5m x 50m)	C	105 lb	Image Side IN
6024216	8.26 oz/yd2	122" x 164' (3.1m x 50m)	C	164 lb	Image Side IN
60130	8.26 oz/yd2	30" x 23' (0.76m x 7m)	N/A	10 lb	Image Side IN

*Roll length in 98" and 122" may vary. Call to confirm available roll lengths

SolvoTex™ Artist 310XC Artist 310XC is a 100% polyester textile and features a high white point. The heavy canvas structure of Artist 310XC makes it a perfect choice for murals and hanging theatrical backdrops. This product is NFPA 701 certified. For use with solvent and uv-curable inks.

Item#	Weight	Roll Size	A,B,C	Roll Weight	Print Side
6003612	10 oz/yd2	122" x 164' (3.1m x 50m)	B	126 lb	Image Side IN
6003613	10 oz/yd2	197" x 164' (5.0m x 50m)	B	199 lb	Image Side IN
60119	10 oz/yd2	30" x 23' (0.76 m x 7m)	N/A	N/A	Image Side IN

SolvoTex™ Artist Banner Light Artist Banner Light is air tight which makes it perfect for all vacuum table printers in the market today. It has a light canvas structure and has the highest color brilliance with deep blacks. For use with solvent and uv-curable inks.

Item#	Weight	Roll Size	A,B,C	Roll Weight	Print Side
6019748	5.9oz/yd2	54" x 164' (1.37m x 50m)	C	39 lb	Image Side OUT
6019749	5.9oz/yd2	61" x 164' (1.55m x 50m)	C	43 lb	Image Side OUT
2221	5.9oz/yd2	20" x 10' (0.5m x 3m)	C	9 lb	Image Side OUT

SolvoTex™ Artist Premium Light S Artist Premium Light S is 100% polyester, light canvas structure without the canvas look. Its excellent color brilliance makes it ideal for displays, especially trade show backdrops. In addition, it can be backlit or frontlit. Meets NFPA 701. For use with solvent and uv-curable inks.

Item#	Weight	Roll Size	A,B,C	Roll Weight	Print Side
6014909	5.9oz/yd2	80" x 164' (2.05m x 50m)	A	55 lb	Image Side IN
6014910	5.9oz/yd2	98" x 164' (2.50m x 50m)	C	66 lb	Image Side IN
6014911	5.9oz/yd2	122" x 164' (3.1m x 50m)	A	81 lb	Image Side IN
6014912	5.9oz/yd2	198" x 164' (5.05m x 50m)	A	133 lb	Image Side IN
60016	5.9oz/yd2	30" x 23' (0.76 m x 7m)	N/A	9 lb	Image Side IN

SolvoTex™ Artist Premium Heavy S This versatile, 100% polyester, heavy canvas structure works well with a variety of display graphics - especially trade show backdrops. It is available in a wide variety of sizes, and will maintain its superior color brilliance outdoors for up to six months. Meets NFPA 701. For use with solvent, latex and uv-curable inks.

Item#	Weight	Roll Size	A,B,C	Roll Weight	Print Side
6014917	8.5oz/yd2	80" x 164' (2.05m x 50m)	A	77 lb	Image Side IN
6014918	8.5oz/yd2	98" x 164' (2.50m x 50m)	A	93 lb	Image Side IN
6014919	8.5oz/yd2	122" x 164' (3.1m x 50m)	A	114 lb	Image Side IN
6014920	8.5oz/yd2	198" x 164' (5.05m x 50m)	A	188 lb	Image Side IN
60017	8.5oz/yd2	30" x 23' (0.76 m x 7m)	N/A	10 lb	Image Side IN

Digital Print Media - Solvent, Latex and UV-Curable Inks - Banner Fabrics continued...

SolvoTex™ PES Banner 240 PES Banner 240 is a 100% polyester fabric media designed for solvent and eco-solvent digital printing. Its tight-weave structure give the material slightly elastic properties, making it ideal for stretch-frames, banner stands, and tension fabric structure applications. PES Banner 240 also features a special coating to ensure sharp image reproduction and brilliant color, yet it remains soft to the touch and offers wrinkle resistant performance. Meets NFPA 701. For use with solvent, eco-solvent, latex, and uv-curable inks.

Item#	Weight	Roll Size	A,B,C	Roll Weight	Print Side
6024172	7.1oz/yd2	122" x 164' (3.1m x 50m)	A	96 lb	Image Side IN
6024173	7.1oz/yd2	198" x 164' (5.05m x 50m)	B	158 lb	Image Side IN
60066	7.1oz/yd2	30" x 23' (0.76 m x 7m)	N/A	9 lb	Image Side IN

Digital Print Media - Solvent, Latex and UV-Curable Inks - Cottons

SolvoTex™ Cotton Premium Light S Cotton Premium Light S is a light linen weave, and is made from 100% cotton natural fibers - providing an earth-safe way to achieve photo-realistic print quality. The single side "S" coating provides improved image performance, with higher color gamut and brilliance. This product is for indoor use only. Meets NFPA 701. For use with solvent, latex, and uv-curable inks.

Item#	Weight	Roll Size	A,B,C	Roll Weight	Print Side
6025925	5.9oz/yd2	80" x 164' (2.05m x 50m)	B	68 lb	Image Side IN
6025926	5.9oz/yd2	98" x 164' (2.50m x 50m)	B	81 lb	Image Side IN
6025927	5.9oz/yd2	122" x 164' (3.1m x 50m)	B	99 lb	Image Side IN
6025928	5.9oz/yd2	198" x 164' (5.05m x 50m)	B	164 lb	Image Side IN
60068	5.9oz/yd2	30" x 23' (0.76 m x 7m)	N/A	9 lb	Image Side IN

SolvoTex™ Cotton Premium Heavy S Cotton Premium Heavy S is a heavy linen weave, and is made from 100% natural cotton fibers - providing an earth-safe way to achieve photo-realistic print quality. The single side "S" coating provides improved image performance, with higher color gamut and brilliance. This product is for indoor use only. This product is non-FR. For use with solvent and uv-curable inks.

Item#	Weight	Roll Size	A,B,C	Roll Weight	Print Side
6025914	9.7 oz/yd2	122" x 164' (3.1m x 50m)	C	144 lb	Image Side IN
6025918	9.7 oz/yd2	198" x 164' (5.05m x 50m)	C	237 lb	Image Side IN
60069	9.7 oz/yd2	30" x 23' (0.76 m x 7m)	N/A	9 lb	Image Side IN

SolvoTex™ Digital Sharkstooth This artistic open scrim mesh is 100% cotton and is perfect for indoor ceiling construction applications. Meets NFPA 701. For use with solvent and uv-curable inks.

Item#	Weight	Roll Size	A,B,C	Roll Weight	Print Side
6009210	4.1oz/yd2	197" x 164' (5.05m x 50m)	C	90 lb	Image Side IN
60038	4.1oz/yd2	30" x 23' (0.76 m x 7m)	C	8 lb	Image Side IN

Digital Print Media - Solvent and UV-Curable Inks - Blockout Fabrics

SolvoTex™ No-Lite 335 No-Lite 335 allows for double sided printing on either the polyester or foam side. This material has a matte finish and also features an absolute blackout effect that makes it ideal for multiple applications. Meets NFPA 701. For use with solvent and uv-curable inks.

Item#	Weight	Roll Size	A,B,C	Roll Weight	Print Side
6003606	9.8oz/yd2	110" x 150' (2.8m x 46m)	A	110 lb	Image Either Side
60036	9.8oz/yd2	30" x 23' (0.76 m x 7m)	N/A	11 lb	Preferred Side IN

SolvoTex™ No-Lite Double Poly No-Lite Double Poly is a double-sided polyester that boasts an absolute blackout effect. It is printable on both sides and provides great outdoor durability. Meets NFPA 701. For use with solvent and uv-curable inks.

Item#	Weight	Roll Size	A,B,C	Roll Weight	Print Side
6003609	13.2oz/yd2	84" x 90' (2.13m x 27m)	A	52 lb	Image Side Symmetric
60037	13.2oz/yd2	30" x 23' (0.76 m x 7m)	N/A	11 lb	Preferred Side IN

Digital Print Media - Solvent and UV-Curable Inks - Flags

SolvoTex™ PES Flag Plus 2 PES Flag Plus 2 is a 100% polyester transparent, knitted fabric that provides excellent color brilliance for outdoor applications - durable for up to six months. It is also wrinkle and crease free. Meets NFPA 701. For use with solvent and uv-curable inks.

Item#	Weight	Roll Size	A,B,C	Roll Weight	Print Side
6015959	3.7oz/yd2	80" x 328' (2.05m x 100m)	A	68 lb	Image Side IN
6015960	3.7oz/yd2	122" x 328' (3.1m x 100m)	B	99 lb	Image Side IN
6015961	3.7oz/yd2	198" x 328' (5.05m x 100m)	A	158 lb	Image Side IN
60027	3.7oz/yd2	30" x 23' (0.76 m x 7m)	N/A	7 lb	Image Side IN

SolvoTex™ TCS Flag Plus This transparent, knitted fabric features 100% Trevira CS polyester, and promises excellent color brilliance for outdoor applications, even after six months of environmental exposure. Other fabric benefits include a nice bleed through effect, plus it is wrinkle and crease free. Meets NFPA 701. For use with solvent and uv-curable inks.

Item#	Weight	Roll Size	A,B,C	Roll Weight	Print Side
6003544	3.2oz/yd2	80" x 328' (2.05m x 100m)	B	60 lb	Image Side IN
6003545	3.2oz/yd2	122" x 328' (3.1m x 100m)	B	88 lb	Image Side IN
6003546	3.2oz/yd2	198" x 328' (5.05m x 100m)	C	145 lb	Image Side IN
60026	3.2oz/yd2	30" x 23' (0.76 m x 7m)	N/A	7 lb	Image Side IN

Digital Print Media - Solvent and UV-curable Inks - Special Applications

SolvoTex™ TCS Voile Plus This 100% Trevira CS polyester fine voile is transparent and offers exceptional color brilliance. The sheer bleed through effect allows it to be used in a variety of applications including department stores, museum displays, and speaker covers. To create a three dimensional effect, place a duplicate image three feet in front of a printed image. Meets NFPA 701. For use with solvent and uv-curable inks.

Item#	Weight	Roll Size	A,B,C	Roll Weight	Print Side
6003601	1.3oz/yd2	122" x 164' (3.1m x 50m)	A	25 lb	Image Side IN
6003602	1.3oz/yd2	198" x 164' (5.05m x 50m)	B	88 lb	Image Side IN
60028	1.3oz/yd2	30" x 23' (0.76 m x 7m)	N/A	6 lb	Image Side IN

SolvoTex™ Theatre 310 Plus Theatre 310 Plus softens the look of theatrical or museum backdrops with an ultra-matte non-glare surface. This coated heavy poplin weave is 100% polyester. Meets NFPA 701. For use with solvent and uv-curable inks.

Item#	Weight	Roll Size	A,B,C	Roll Weight	Print Side
6025473	8.7oz/yd2	122" x 164' (3.1m x 50m)	C	114 lb	Image Side IN
6025474	8.7oz/yd2	198" x 164' (5.05m x 50m)	C	188 lb	Image Side IN
60081	8.7oz/yd2	30" x 23' (0.76 m x 7m)	N/A	10 lb	Image Side IN

SolvoTex™ TCS 200 Plus 2 This 100% Trevira CS polyester is one of the only dual purpose satins available. It is uniquely designed with a light satin finish on one side and a true poplin finish on the other. This textile is wrinkle free and crease free. Meets NFPA 701. For use with solvent and uv-curable inks.

Item#	Weight	Roll Size	A,B,C	Roll Weight	Print Side
6014934	5.9oz/yd2	198" x 164' (5.05m x 50m)	B	133 lb	Image Side IN
60029	5.9oz/yd2	30" x 23' (0.76 m x 7m)	N/A	9 lb	Image Side IN

SolvoTex™ TCS 300 Plus 2 TCS 300 Plus 2 is ideal for grand format trade show graphics. This heavy super durable polyester canvas fabric offers excellent color brilliance for up to two years. Meets NFPA 701. For use with solvent and uv-curable inks.

Item#	Weight	Roll Size	A,B,C	Roll Weight	Print Side
6014943	8.8oz/yd2	122" x 164' (3.1m x 50m)	B	118 lb	Image Side IN
6014944	8.8oz/yd2	198" x 164' (5.05m x 50m)	A	189 lb	Image Side IN
60030	8.8oz/yd2	30" x 23' (0.76 m x 7m)	N/A	10 lb	Image Side IN

SolvoTex™ Samba Light Box Samba Light Box utilizes our universal coating technology to achieve the highest print quality possible today. It is 100% polyester and can be either front or back lit. Meets NFPA 701. For use with solvent and uv-curable inks.

Item#	Weight	Roll Size	A,B,C	Roll Weight	Print Side
6009862	3.8oz/yd2	122" x 164' (3.1m x 50m)	B	54 lb	Image Side IN
60039	3.8oz/yd2	30" x 23' (0.76 m x 7m)	N/A	7 lb	Image Side IN

Digital Print Media - Solvent and UV-curable Inks - PVC Flexface

SolvoTex™ PVC Premium FL PVC Premium FL is a 100% polyester that features a PVC top coating on each side. It is fungus and UV resistant - making it ideal for indoor or outdoor frontlit applications. Meets NFPA 701. For use with solvent, eco-solvent, latex and uv-curable inks.

Item#	Weight	Roll Size	A,B,C	Roll Weight	Print Side
6009183	14.7oz/yd2	54" x 164' (1.37m x 50m)	C	55 lb	Image Side IN
6009184	14.7oz/yd2	61" x 164' (1.55m x 50m)	C	99 lb	Image Side IN
6009185	14.7oz/yd2	80" x 164' (2.05m x 50m)	B	130 lb	Image Side IN
6009186	14.7oz/yd2	98" x 164' (2.5m x 50m)	B	160 lb	Image Side IN
6009187	14.7oz/yd2	126" x 164' (3.2m x 50m)	B	199 lb	Image Side IN
6009188	14.7oz/yd2	197" x 164' (5.0m x 50m)	B	314 lb	Image Side IN
60010	14.7oz/yd2	30" x 23' (0.76 m x 7m)	N/A	13 lb	Image Side IN

SolvoTex™ PVC Black Back FL PVC Black Back FL is a polyester that is double-side coated with fungus and UV resistant PVC. It features a black back for a blackout effect - creating the optimum material for frontlit applications. Meets NFPA 701. For use with solvent, eco-solvent and uv-curable inks.

Item#	Weight	Roll Size	A,B,C	Roll Weight	Print Side
6009191	14.7oz/yd2	126" x 164' (3.2m x 50m)	C	199 lb	Image Side IN
6009192	14.7oz/yd2	197" x 164' (5.0m x 50m)	C	314 lb	Image Side IN
60012	14.7oz/yd2	30" x 23' (0.76 m x 7m)	N/A	13 lb	Image Side IN

Digital Print Media - Solvent and UV-curable Inks - PVC Flexface continued...

SolvoTex™ PVC Premium BL PVC Premium BL is polyester that is double-side coated with a PVC topcoat - creating the perfect material for backlit applications. It is also fungus and UV resistant. Meets NFPA 701. For use with solvent, eco-solvent and uv-curable inks.

Item#	Weight	Roll Size	A,B,C	Roll Weight	Print Side
6009181	14.7oz/yd2	126" x 164' (3.2m x 50m)	B	199 lb	Image Side IN
6009182	14.7oz/yd2	197" x 164' (5.0m x 50m)	C	314 lb	Image Side IN
60011	14.7oz/yd2	30" x 23' (0.76 m x 7m)	N/A	13 lb	Image Side IN

SolvoTex™ PVC Standard Blockout PVC Standard Blockout is polyester that is double-side coated with a PVC topcoat - creating a total blackout effect. Meets NFPA 701. For use with solvent, eco-solvent and uv-curable inks.

Item#	Weight	Roll Size	A,B,C	Roll Weight	Print Side
6027033	15.2oz/yd2	54" x 164' (1.37m x 50m)	C	45 lb	Image Side IN
6027035	15.2oz/yd2	83" x 164' (2.1m x 50m)	C	75 lb	Image Side IN
6027036	15.2oz/yd2	98" x 164' (2.5m x 50m)	C	160 lb	Image Side IN
6027037	15.2oz/yd2	126" x 164' (3.2m x 50m)	C	156 lb	Image Side IN
6027038	15.2oz/yd2	189" x 164' (4.8m x 50m)	C	250 lb	Image Side IN
60085	15.2oz/yd2	30" x 23' (0.76 m x 7m)	N/A	8 lb	Image Side IN

SolvoTex™ PVC Supreme Mesh The PVC Supreme Mesh is a closed-hole mesh that is PVC coated on both sides. It is an ultra-durable material, fungus and UV resistant, and allows for double-side printing. Meets NFPA 701. For use with solvent, eco-solvent and uv-curable inks.

Item#	Weight	Roll Size	A,B,C	Roll Weight	Print Side
6009176	10.3oz/yd2	126" x 164' (3.2m x 50m)	A	104 lb	Image Side IN
6009177	10.3oz/yd2	197" x 164' (5.0m x 50m)	A	165 lb	Image Side IN
60015	10.3oz/yd2	30" x 23' (0.76 m x 7m)	N/A	9 lb	Image Side IN

DirectTex Digital Print Media - Dye Sublimation

DirectTex™ Pro-Poplin Pro-Poplin is 100% polyester fabric that is the product of choice when image quality and performance are the main criteria. Its higher opacity easily hides a graphic's support structure and it is crease and wrinkle free which allows the graphics to be shipped folded-up. Pro-Poplin offers a soft hand and excellent drape with a rich feel, while its high white point allows the graphic's colors to pop. Pro-Poplin is compatible with aqueous or oil based dye transfer techniques, latex, and flexible UV curable inks. Meets NFPA 701. For use with direct dye sub links and transfer dye sub links.

Item#	Weight	Roll Size	A,B,C	Roll Weight	Print Side
3428015	6.2 oz/yd2	61" x 328' (1.55m x 100m)	C	84 lb	Image Side IN
3428018	6.2 oz/yd2	71" x 328' (1.8m x 100m)	C	97 lb	Image Side IN
3428031	6.2 oz/yd2	122" x 328' (3.1m x 100m)	B	163 lb	Image Side IN
60040	6.2 oz/yd2	30" x 23' (0.76 m x 7m)	N/A	9 lb	Image Side IN

DirectTex™ Pro-Poplin Light Pro-Poplin Light is a 100% polyester fabric that is a lighter weight alternative to Pro-Poplin. It delivers the same exceptional performance as Pro-Poplin, but is designed for applications where the higher opacity is not critical. The high white point generates deep, rich color graphics, plus it is crease and wrinkle free for easy shipping. Pro-Poplin Light is compatible with solvent, aqueous or oil based dye transfer techniques and with flexible UV curable inks. Meets NFPA 701. For use with direct dye sub links and transfer dye sub links.

Item#	Weight	Roll Size	A,B,C	Roll Weight	Print Side
3429031	5.0 oz/yd2	122" x 328' (3.1m x 100m)	B	130 lb	Image Side IN
3429033	5.0 oz/yd2	61" x 328' (1.55m x 100m)	C	N/A	Image Side IN
60094	5.0 oz/yd2	30" x 23' (0.76 m x 7m)	N/A	N/A	Image Side IN

DirectTex™ Poplin Superior Poplin Superior is the best value for a frame or pop-up display. It features a rich smooth, tight weave that enhances any graphic by making the image the focus. The bright white point allows creativity to be limited only by imagination, not color density. Poplin Superior is crease and wrinkle resistant and meets the NFPA 701 fire standard. Poplin Superior is compatible with solvent and aqueous based dye transfer techniques. For use with direct dye sub links and transfer dye sub links.

Item#	Weight	Roll Size	A,B,C	Roll Weight	Print Side
6027043	6 oz/yd2	61" x 164' (1.55m x 50m)	C	N/A	Image Side IN
6027042	6 oz/yd2	122" x 164' (3.1m x 50m)	C	N/A	Image Side IN
60093	6 oz/yd2	30" x 23' (0.76 m x 7m)	N/A	N/A	Image Side IN

DirectTex™ Knit Banner Light Knit Banner Light is a lightweight, poplin fabric that is perfect for short-term promotional displays. It features our unrivaled coating technology which delivers the brightest colors and sharpest edges with both direct print and transfer dye sublimation. Knit Banner Light is NFPA 701 fire standard rated. For use with direct dye sub links and transfer dye sub links.

Item#	Weight	Roll Size	A,B,C	Roll Weight	Print Side
6027046	4.7 oz/yd2	122" x 164' (3.1m x 50m)	C	N/A	Image Side IN
60092	4.7 oz/yd2	30" x 23' (0.76 m x 7m)	N/A	N/A	Image Side IN

DirectTex™ PES Flag 110 PES Flag 110 is made from 100% polyester. This product features our unrivaled coating that delivers the brightest colors, deepest blacks and sharpest edges with both direct print and transfer dye sublimation. Expected outdoor durability is six months. PES Flag 110 meets the NFPA 701 fire standard. For use with direct dye sub links and transfer dye sub links.

Item#	Weight	Roll Size	A,B,C	Roll Weight	Print Side
6001001	3.4 oz/yd2	71" x 164' (1.8m x 50m)	C	56 lb	Image Side IN
6001012	3.4 oz/yd2	122" x 164' (3.1m x 50m)	C	92 lb	Image Side IN
60051	3.4 oz/yd2	30" x 23' (0.76 m x 7m)	N/A	7 lb	Image Side IN

Liquid Coating Systems - Water-Based

Accu-18XE Designed for professional photographic labs and studios, providing fully automatic, high speed, dry-to-dry, protective coating for digital and photographic images. Handles images form 5" x 7" to 18" x 24".

Item#	Electrical	Coating Width
63302	115V	18" (.45m)

AccuCoat 1600 The AccuCoat 1600 increases the profitability of your business by providing cost effective, uniform and durable coating solutions that enhance and protect your digital graphics. Perfect for fleet and wallpaper applications.

Item#	Electrical	Coating Width
63461	240V	60" (1.5m)

Accessories

Item#	Description
A210195	#7 (69") Smooth drawdown bar
A210196	#11 (69") Meyer drawdown bar
A210197	#22 (69") Meyer drawdown bar
A210174	#32 (69") Meyer drawdown bar
A210198	#40 (69") Meyer drawdown bar
A165133	Extra Supply Tank with pedestal and mounting hardware for 1.6m (includes all necessary plumbing)
A165134	Extra Supply Tank without pedestal for 1.6m (includes all necessary plumbing)
A175114	3.3m Tank level/flow sensor option
A154122	Dual tank option for 3.3m
A154131	#11 (129") Meyer drawdown assembly (bar and mounting brackets)
A154130	#22 (129") Meyer drawdown assembly (bar and mounting brackets)
A154146	#32 (129") Meyer drawdown assembly (bar and mounting brackets)

Liquid Coatings - Water-Based

AccuLac™ 1100 This water-based acrylic coating offers an economic way to protect your graphics. It is especially suited for use with photographs, and is available in either a clear or luster finish.

Item#	Finish	Size
5001101	Clear	1 Gallon
5001102	Luster	1 Gallon

AccuLac™ 1250 Use this water-based acrylic coating for an easy-to-clean solution to enhance and protect inkjet and photographic images. AccuLac 1250 produces less odor than other coatings and is available in a clear, luster and matte finish.

Item#	Finish	Size
5001251	Clear	1 Gallon
5001252	Luster	1 Gallon
5001253	Matte	1 Gallon

AccuLac™ 1400 This water-based urethane coating is not only easy-to-clean, but also has a low odor making it ideal for preserving and enhancing inkjet and photographic images. It is available in a clear finish.

Item#	Finish	Size
5001400	Clear	1 Gallon

UltraCoat® Fleet Engineered specifically for fleet graphics of all types. The semi-gloss properties of UltraCoat Fleet ensure maximum visceral exposure of the intended message while giving maximum "pop" to the image without distortion or color shift.

Item#	Finish	Size
62603	Semi Gloss	5 Gallon

UltraCoat® Giclee UltraCoat Giclee is designed to work specifically with our Giclee coater. It is available in a clear or matte finish that is perfect for use in the fine art market.

Item#	Finish	Size
62616	Clear Gloss	(2) 1 Gallon
62617	Satin	(2) 1 Gallon

UltraCoat® Interior This coating offers the lowest reflective properties of any single component water-based coating on the market today! UltraCoat Interior is ideal for durable indoor wall covering applications requiring the look of an ultra-matte surface.

Item#	Finish	Size
62622	Ultra Matte	5 Gallon

Liquid Coatings - Water-Based continued...

UltraCoat® Sign & Banner This quick drying and cost effective coating is ideal for manual or machine application and is available in a gloss or matte finish.

Item#	Finish	Size
62611	Gloss	5 Gallon
62613	Matte	5 Gallon

Liquid Coatings - UV

AccuCure™ Elite UV Fleet Gloss The Elite UV Fleet Gloss liquid coating is an ultraviolet curable liquid that was specifically engineered for use with the Neschen AccuCure UV liquid laminating machines. For use with vinyl, it has a quick-cure, low-odor formulation with an ideal viscosity that delivers a smooth finish every time - perfect for long-lasting fleet graphics.

Item#	Finish	Size
5004516	Gloss	(2) 2.5 Gallon

AccuCure™ Elite UV Fleet Luster The Elite UV Fleet Luster liquid coating is an ultraviolet curable liquid that was specifically engineered for use with the Neschen AccuCure UV liquid laminating machines. For use with vinyl, it has a quick-cure, low-odor formulation with an ideal viscosity that delivers a smooth finish every time - perfect for long-lasting fleet graphics.

Item#	Finish	Size
5004512	Luster	(2) 2.5 Gallon

AccuCure™ Elite UV Gloss This highly protective hard coat, ultraviolet-curable coating liquid is specifically formulated for use with the Neschen AccuCure UV liquid lamination machines. It Cures quickly and is immediately ready for display. Use Elite Satin Matte with boards and rigid substrates for superior scuff and abrasion resistance. It can also be used for most vinyl applications that do not have complex curves and bends.

Item#	Finish	Size
5004521	Gloss	(2) 2.5 Gallon

AccuCure™ Elite UV Satin Matte This highly protective hard coat, ultraviolet-curable coating liquid is specifically formulated for use with the Neschen AccuCure UV liquid lamination machines. It Cures quickly and is immediately ready for display. Use Elite Satin Matte with boards and rigid substrates for superior scuff and abrasion resistance. It can also be used for most vinyl applications that do not have complex curves and bends.

Item#	Finish	Size
5004523	Satin Matte	(2) 2.5 Gallon

Laminates, Adhesives and Backing Films Special Cut Policy

Consumables Special Cut Policy: Assorted items within our product range are available in custom cut sizes. Pricing schedule is as listed. For up to 14 original rolls to be slit: \$50.00 set-up fee + \$10.00 slitting fee per roll (up to three cuts allowed per roll). Occasionally special cut rolls will contain a splice.

- For quantities of 15 rolls and greater: All set-up and slitting fees are waived.
- You pay for full roll width even if the full roll is not used
- Lead time varies. Call Customer Service for an exact lead time.
- Roll quantities calculated based on original roll (i.e. 51" roll slit into two 25" rolls equals one roll)

Example 1

Order a 51" roll and have it cut into two 25" rolls the cost would be \$50.00 (for set-up) + \$10.00 (for slitting) = \$60.00 (i.e. 51" roll slit into two 25" rolls equals one roll)

Example 2

Order 2 rolls to be cut into 4 rolls the cost would be \$50.00 (for set-up) + \$20.00 (for slitting) = \$70.00

Textiles & PVC Special Cut Policy

Textiles & PVC's: First cut is no charge. All subsequent cuts are \$10 each.

Terms and Conditions of Sale

Freight Minimums

Laminates Adhesives Inkjet Media Pouch Board Textiles and Flex Face PVC (54" - 71") PrimeX Liquid Laminates Neschen Display Systems	Orders Exceeding \$5,000 - FREE Freight \$2,500 to \$4,999.99 -3 % Surcharge on the Value of the Order Orders less than \$2500 - Full Freight
--	---

Textiles and Flex Face PVC (80" and greater) Expolinc Displays Enviroboard™ MR	FOB Elkridge, MD, Los Angeles, CA and Alsip, IL All orders are PPA (prepay and add) All orders are PPA (prepay and add)
--	---

Equipment Shipping & Handling

All Shipments FOB Sun Prairie, WI

Shipping & Handling Charges	As of April 1, 2011 the handling fee will be a flat rate of \$150 per order regardless of the number of machines on the order or the model of the machine(s). In the past, handling fees were assessed on a per machine basis and varied by model.
Handling Fees Defined	Handling fees are necessary to cover the cost incurred by Neschen Americas logistics for completing all the shipping documents and proper paperwork for domestic deliveries, scheduling the pickup with the appropriate freight company, securing freight quotes, and coordinating appropriate delivery methods for machines based on delivery location facilities.
Customer Pick Up / "Will Call"	To avoid the handling fee, a customer can request a "customer pick up". The only way the handling fee will be waived on such orders is if the customer satisfies the following requirements: 1. Once notified that the machine is ready, the customer contacts the freight company to schedule the pick up. 2. The customer must coordinate with the freight company to complete the bill of lading (BOL). NOTE: If Neschen Americas logistics has to coordinate, contact or complete the BOL for the customer, the handling fee will be assessed to the order.
Best Way / Third Party Pick Up	When the customer requests their own freight company, it is not considered a customer pick up or will call unless the customer also completes numbers one and two from above. The handling fee will be assessed to these orders based on the fact that Neschen Americas logistics is still coordinating the pick up with the freight company and is handling the paper work on behalf of the customer. The only advantage of this method of freight is the customer will be billed by their specified carrier the negotiated rate they have with that particular freight company.
Communication / Customer Service	To avoid confusion or freight charge disputes, customer service will be responsible for clarifying the handling fees and third party pick up details with the customer at the time when the order is placed.

Backorders

All products - Partial shipments allowed.

Spliced Rolls

All products - Splices are allowed on all laminates and adhesives. Laminates and adhesives have an extra 9' of material on them to compensate for the splice.

Restock Fee

All products - 20%

Payment Terms

All products - 1% 20, Net 30

International Wire Fee

Any cost incurred by Neschen Americas will be added to customer's invoice.

- Minimum annual volume to maintain an open commercial account is \$1500.00.
- Prompt payment or freight allowance discounts do not apply to commercial mounting and laminating equipment.
- Neschen reserves the right to make a claim to a 3rd party consumer for any uncollected amount not paid by the reseller.
- All handling and processing of Neschen goods by a reseller shall always retain the Neschen and/or SEAL product name on all orders. If the reseller ships an order with other products belonging to different suppliers, Neschen shall retain co-ownership at a ratio of the invoice value of the Neschen/SEAL product to the total invoiced value of the shipment.
- Neschen reserves the right of ownership in all goods until complete and final payment is made on the purchase price. Accordingly, you have granted us a security interest in all such goods under the Uniform Commercial Code.

Terms and Conditions of Sale continued...

Equipment Warranty: One Year Parts / Six Months Labor Limited Warranty*

Neschen Americas warrants to the original consumer purchaser that each new SEAL or Neschen brand equipment product which proves defective in materials or workmanship within the applicable warranty period will be repaired or, at our option, replaced without charge upon its return, postpaid, as outlined below. The applicable warranty shall be one year from date of purchase for parts, 6 months for labor and 6 months for rollers (rollers warranted against manufacturers defects) and applies only in respect to the uses for which the product was intended by Neschen Americas. "Original consumer purchaser" means the person who first purchased the product covered by this warranty other than for purpose of resale. Refurbished equipment carries a 90-day parts and labor limited warranty, excluding rollers. Neschen Americas' liability for breach of any warranty, expressed or implied, shall be limited to the repair or replacement at Neschen Americas' option of the defective item.

Neschen Americas shall not be liable for damages, including but not limited to incidental, consequential, indirect, punitive or special damages, arising out of or in connection with the use or performance of any SEAL or Neschen brand product. Any implied warranty shall be limited in duration to the duration of this warranty. Some states do not allow limitations on how long an implied warranty lasts or the exclusion or limitation of incidental or consequential damages, so the above limitation & exclusion may not apply to you.

Neschen Americas and its officers, directors, shareholders, principals, agents, representatives and affiliates shall not be liable for damages from mishandling and abuse in transit, in which case a claim should be filed with the carrier. This warranty does not cover any defect or malfunction due to or caused by unreasonable use or abuse, or failure to provide reasonable and necessary maintenance, which shall be determined by Neschen Americas in its sole discretion.

NESCHEN AMERICAS MAKES NO OTHER WARRANTIES, EXPRESS OR IMPLIED, INCLUDING, WITHOUT LIMITATION, THOSE OF MERCHANTABILITY AND OF FITNESS FOR A PARTICULAR PURPOSE, WITH RESPECT TO THE SEAL OR NESCHEN BRAND EQUIPMENT PRODUCT SOLD HEREUNDER.

ProSEAL Warranty: One Year Parts / Six Months Roller Limited Warranty

Neschen Americas warrants to the original consumer purchaser that each new ProSEAL equipment product which proves defective in materials or workmanship within the applicable warranty period will be repaired or, at our option, replaced without charge upon its return, postpaid, as outlined below. The applicable warranty shall be one year from date of purchase for parts, 3 months for rollers (rollers warranted against manufactures defects). "Original consumer purchase" means the person who first purchased the product covered by this warranty other than for purpose of resale. Refurbished equipment carries a 90-day parts and labor limited warranty, excluding rollers. Neschen Americas' liability for breach of any warranty, expressed or implied, shall be limited to the repair or replacement at Neschen Americas' option of the defective item.

Neschen Americas and its officers, directors, shareholders, principals, agents, representatives and affiliates shall not be liable for damages, including but not limited to incidental, consequential, indirect, punitive or special damages, arising out of or in connection with the use or performance of any ProSEAL product. Any implied warranty shall be limited in duration to the duration of this warranty. Some states do not allow limitations on how long an implied warranty lasts or the exclusion or limitation of incidental or consequential damages, so the above limitation & exclusion may not apply to you.

Neschen Americas is not responsible for damages from mishandling and abuse in transit, in which case a claim should be filed with the carrier. This warranty does not cover any defect or malfunction due to or caused by unreasonable use or abuse, or failure to provide reasonable and necessary maintenance, which shall be determined by Neschen Americas in its sole discretion.

NESCHEN AMERICAS MAKES NO OTHER WARRANTIES, EXPRESS OR IMPLIED, INCLUDING, WITHOUT LIMITATION, THOSE OF MERCHANTABILITY AND OF FITNESS FOR A PARTICULAR PURPOSE, WITH RESPECT TO THE PROSEAL EQUIPMENT PRODUCT SOLD HEREUNDER.

Equipment Repair: A product out of warranty in need of repair will be repaired in accordance with the approval repair system. Replacement parts carry a 90 day warranty. Contact Technical Support at 1-800-486-6502 for more information.

*Excludes ProSEAL Laminators

Spare Parts Support for Discontinued Machines: Neschen Americas will provide spare parts support for our SEAL brand roller laminators and Neschen brand liquid coaters for a period of five (5) years after the last machine is manufactured and shipped from our manufacturing location. Spare parts can be ordered through our Technical Service Department at 1-800-486-6502 press # 1. After the 5 year period, parts may still be available; however availability is not guaranteed.

Consumables Warranty: Neschen Americas warrants to the original consumer purchaser that each new consumable product will perform materially up to published specification. Any products that are obsolete or are over one year old from the date of the dealer's invoice are not eligible for return or credit. Neschen Americas and its officers, directors, shareholders, principals, agents, representatives and affiliates shall not be liable for damages, including but not limited to incidental, consequential, indirect, punitive or special damages, arising out of or in connection with the use or performance of any consumable product. Some states do not allow limitations on the exclusion or limitation of incidental or consequential damages, so the above limitation & exclusion may not apply to you.

NESCHEN AMERICAS MAKES NO OTHER WARRANTIES, EXPRESS OR IMPLIED, INCLUDING, WITHOUT LIMITATION, THOSE OF MERCHANTABILITY AND OF FITNESS FOR A PARTICULAR PURPOSE, WITH RESPECT TO THE CONSUMABLE PRODUCT SOLD HEREUNDER.

100% Customer Satisfaction Guarantee Policy

In order to better serve our customers, we have established the following guidelines to facilitate the administration of our 100% Customer Satisfaction Guarantee for Consumables, Inkjet Media, Textiles and Liquids. All of the information needed for smooth RMA and credit transactions is detailed in this document.

Please note: products can be no more than one year beyond their production date (as indicated by their lot code which is designated on the roll of material) to be eligible for return within the guidelines stated below.

Remember that an RMA number must still be issued by our Customer Service department for any product being returned to Neschen Americas.

Satisfaction Guaranteed Return Types:

Quality Defects

a. Maximum of two rolls of material with a value of \$2,500 or less

A credit will be issued to the customer within 48 hours of our receipt of a sample of the defective material.

b. Three or more rolls of material or an order value of greater than \$2,500

We will provide the customer with a course of action based on the following two scenarios within 48 hours of our receipt of the defective sample.

1. Destroy in field – Customer will be asked to dispose of the defective material and a credit will be processed at the time of communication.
2. Rolls to be returned – This occurs when the entire lot of rolls needs to be returned to Neschen Americas for an evaluation of the defect. A credit will be issued to the customer within 48 hours of our receipt of the rolls.

Stock Rotation

a. Reseller Stock Rotation

A credit will be issued to the reseller within five business days of our receipt of the returned product. The product must fall within the detailed stock rotation guidelines noted below:

1. Stock rotations must be made within six months of the original purchase from Neschen Americas (a maximum of two stock rotations per year).
2. We ask that the reseller provide the lot codes for each roll being considered for stock rotation. These lot codes will be used to determine the roll's production date, which must be within one calendar year of the requested return. Any rolls produced outside of this one year time frame will not be considered for a stock rotation credit. Customer Service will communicate any discrepancies to the appropriate Neschen Americas Sales Representative, and Sales will communicate them to the Reseller.
3. A 20% restock fee will be applied to all stock rotation returns. A reseller placing an offsetting purchase order of equal or greater value than the stock rotation request will be exempt from this restock fee. The offsetting order must be placed at the same time the rotation request is made to qualify for exemption from the 20% restock fee.
4. The reseller requesting the stock rotation will be responsible for the returned product's freight costs. If products being returned as part of a stock rotation arrive at Neschen Americas with freight damage they will be refused at our dock upon attempted delivery.
5. A \$15.00 re-box fee will be applied to all rolls requiring repackaging for resale. We will notify the reseller within 48 hours of our receipt of the returned product of the total re-box fees that will be applied to their stock rotation credit.

100% Customer Satisfaction Guarantee Policy continued...

6. Only SEAL or Neschen brand products will be considered for stock rotation returns. Equipment, Eco Board, private label items, special orders products, container orders, specialty products, special cuts, discontinued and obsolete items are not eligible for stock rotation returns. Please refer to the Neschen Americas Terms and Conditions of Sale page of your price book for information on our Equipment Warranty.
7. We will only issue credit for product that can be restocked and resold.

Freight Damage

a. Product value not exceeding \$2,500

1. We will ask the customer to provide us with digital photographs of the damage and we will issue a credit within 48 hours of our receipt of the pictures.

b. Product value exceeding \$2,500 and the product is received by the customer

1. We ask that the customer provide us with digital pictures of the damage and we will issue a credit within 48 hours of our receipt of the pictures.
2. The Neschen Americas Shipping Department will contact the appropriate carrier to set up a freight claim inspection.

c. Product value exceeding \$2,500 and the product is refused by the customer

1. The customer will be asked to provide a fax copy of the packing list refusal and a credit will be issued within 48 hours of our receipt of the fax.
2. Our Shipping Department will contact the appropriate carrier to set up a freight claim and arrange to have the damaged materials returned to Neschen Americas.
3. We will process a replacement order at the time of the customer's initial notification of the freight damaged order.

Please contact your Sales or Customer Service Representative if you have any questions about this policy.

Neschen Americas Technical Service Department (800) 486-6502
Neschen Americas Customer Service Department (800) 257-7325
Neschen Americas Customer Service Department Fax (800) 966-4554
www.sealbrands.com
www.neschenbrands.com

Neschen Americas
7091 Troy Hill Drive
Elkridge, MD 21075
Tel: (410) 540-8900
Fax: (410) 579-8960

All prices in US Dollars. Errors and omissions excluded. All prices and availability subject to change.



	Item #	Description	A, B, C	List Price	Roll Weight
<u>Heat-Set Laminating Films</u>					
Print Guard UV					
Gloss	60277	38" x 25' (965mm x 7.6m)	N/A	\$49.00	8 lb
Luster	60304	38" x 25' (965mm x 7.6m)	N/A	\$45.00	8 lb
Satin Matte	60316	38" x 25' (965mm x 7.6m)	N/A	\$45.00	8 lb
Floor Guard	60324	38" x 25' (965mm x 7.6m)	N/A	\$52.00	10 lb
<u>Heat-Activated Laminating Films</u>					
Jet Guard UV					
Gloss 3mil (1/2) polyester	62101	38" x 25' (965mm x 7.6m)	N/A	\$29.00	8 lb
Gloss 5mil (3/2) polyester	62111	38" x 25' (965mm x 7.6m)	N/A	\$29.00	10 lb
Gloss 10mil (7/3) polyester	62121	38" x 25' (965mm x 7.6m)	N/A	\$37.00	12 lb
Luster 3mil (1/2) polyester	62131	38" x 25' (965mm x 7.6m)	N/A	\$29.00	8 lb
Matte 3mil (1/2) polyester	62141	38" x 25' (965mm x 7.6m)	N/A	\$29.00	8 lb
Jet Guard Crystal Matte	60283	38" x 25' (965mm x 7.6m)	N/A	\$41.00	8 lb
Jet Guard Deep Crystal	60275	38" x 25' (965mm x 7.6m)	N/A	\$41.00	8 lb
ThermaShield					
Gloss 1.7mil polyester	62404	38" x 25' (965mm x 7.6m)	N/A	\$29.00	7 lb
Gloss 3mil (1/2) polyester	62409	38" x 25' (965mm x 7.6m)	N/A	\$26.00	8 lb
Gloss 5mil (2/3) polyester	62414	38" x 25' (965mm x 7.6m)	N/A	\$29.00	8 lb
Gloss 10mil (4/6) polyester	62419	38" x 25' (965mm x 7.6m)	N/A	\$39.00	11 lb
Luster 3mil (1/2) polyester	62424	38" x 25' (965mm x 7.6m)	N/A	\$29.00	8 lb
Matte 3mil (1/2) polyester	62429	38" x 25' (965mm x 7.6m)	N/A	\$29.00	8 lb
<u>Pressure-Sensitive Laminating Films</u>					
Print Shield Xtreme UV					
Gloss	83101	38" x 25' (965mm x 7.6m)	N/A	\$56.00	6 lb
Luster	83111	38" x 25' (965mm x 7.6m)	C	\$56.00	6 lb
Matte	83121	38" x 25' (965mm x 7.6m)	C	\$56.00	6 lb
Print Shield Standard UV					
Gloss	62201	38" x 25' (965mm x 7.6m)	N/A	\$41.00	9 lb
Luster	62211	38" x 25' (965mm x 7.6m)	N/A	\$38.00	9 lb
Matte	62221	38" x 25' (965mm x 7.6m)	N/A	\$38.00	9 lb
Print Shield Base					
Gloss	83161	38" x 25' (965mm x 7.6m)	C	\$35.00	9 lb
Luster	83171	38" x 25' (965mm x 7.6m)	C	\$35.00	9 lb
Matte	83181	38" x 25' (965mm x 7.6m)	C	\$35.00	9 lb
Print Shield Anti-Graffiti	62271	38" x 25' (965mm x 7.6m)	N/A	\$139.00	9 lb
Print Shield Polycarbonate					
5 mil	62701	38" x 25' (965mm x 7.6m)	N/A	\$53.00	9 lb
10 mil	62711	38" x 25' (965mm x 7.6m)	N/A	\$69.00	12 lb
Print Shield Floor Guard	62291	38" x 25' (965mm x 7.6m)	N/A	\$73.00	10 lb
Print Shield Deep Crystal	63015	38" x 25' (965mm x 7.6m)	N/A	\$43.00	5 lb
SEAL Write	60741	25" x 25' (635mm x 7.6m)	N/A	\$32.00	5 lb
<u>Pressure-Sensitive Mounting Adhesives</u>					
Print Mount Ultra	60668	38" x 25' (965mm x 7.6m)	N/A	\$52.00	9 lb
Print Mount Plus	60662	38" x 25' (965mm x 7.6m)	N/A	\$60.00	9 lb
Print Mount White	62008	38" x 25' (965mm x 7.6m)	N/A	\$42.00	6 lb
Print Mount Delta	63170	38" x 25' (965mm x 7.6m)	N/A	\$38.00	8 lb
Print Mount DualTemp	63246	38" x 25' (965mm x 7.6m)	N/A	\$42.00	10 lb
Eco Mount	63180	38" x 25' (965mm x 7.6m)	N/A	\$30.00	6 lb
Print Mount Removable	60293	38" x 25' (965mm x 7.6m)	N/A	\$55.00	12 lb
Print Mount 831	S831	38" x 15' (965mm x 4.6m)	N/A	\$49.00	6 lb
OptiMount Ultra	62062	25" x 25' (635mm x 7.6m)	C	\$189.00	8 lb
OptiMount	62076	25" x 25' (635mm x 7.6m)	B	\$95.00	8 lb
gudy window by SEAL	62080	38" x 15' (965mm x 4.6m)	A	\$95.00	4 lb



Heat-Activated Backing Films

Stoplight

Item #	Description	A, B, C	List Price	Roll Weight
62024	38" x 25' (965mm x 7.6m)	N/A	\$44.00	8 lb
60669	38" x 25' (965mm x 7.6m)	N/A	\$85.00	10 lb
63020	38" x 25' (965mm x 7.6m)	N/A	\$92.00	10 lb

LightShield

LightShield 250	63026	38" x 25' (965mm x 7.6m)	N/A	\$109.00	10 lb
LightShield 380	63030	38" x 25' (965mm x 7.6m)	N/A	\$195.00	12 lb



Self Adhesive Print Media

SolvoPrint™ ProGrip

Item#	Thickness/Weight	Roll Size	A,B,C	List Price	Roll Weight	Print Side	
Matte, Aqueous Adhesive - Permanent	62770	3.4 mil	30" x 10'	N/A	\$25.00	5 lb	Image Side OUT
Matte, Aqueous Adhesive - Removable	62780	3.4 mil	30" x 10'	N/A	\$25.00	5 lb	Image Side OUT

SolvoPrint™ MightyGrip

Gloss, Aqueous Adhesive - Permanent	62890	3.5 mil	30" x 10'	B	\$25.00	8 lb	Image Side OUT
Matte, Aqueous Adhesive - Permanent	62900	3.5 mil	30" x 10'	B	\$25.00	8 lb	Image Side OUT
Gloss, Aqueous Adhesive - Removable	62760	3.5 mil	30" x 10'	N/A	\$25.00	5 lb	Image Side OUT
Matte, Aqueous Adhesive - Removable	62750	3.5 mil	30" x 10'	N/A	\$25.00	5 lb	Image Side OUT
Gloss, Gray Aqueous Adhesive - Permanent	62930	3.5 mil	30" x 10'	C	\$25.00	8 lb	Image Side OUT
Matte, Gray Aqueous Adhesive - Permanent	62940	3.5 mil	30" x 10'	C	\$25.00	8 lb	Image Side OUT

INDISPLAY Media

PrintLux™ Easy Panel 310 CA	60076	12 mil	30" x 10'	N/A	\$40.00	7 lb	Image Side OUT
PrintLux™ Easy Panel 430 CA	60078	17 mil	30" x 10'	N/A	\$40.00	7 lb	Image Side OUT
PrintLux™ Nolite 350	60080	14 mil	30" x 10'	N/A	\$45.00	7 lb	Image Side OUT

Printex™ Easy Banner Light	6024513	4.9 oz / yd2	30"x 10'	N/A	\$31.00	6 lb	Image Side OUT
Printex™ Easy Banner Heavy	6024524	7.1 oz / yd2	30" x 10'	N/A	\$31.00	6 lb	Image Side OUT

VariTex™ DecoFrame 250 CA	60130	8.26 oz/yd2	30" x 23'	N/A	\$40.00	10 lb	Image Side IN
---------------------------	-------	-------------	-----------	-----	---------	-------	---------------

SolvoPrint™ Nolite 165	60129	6.5 mil	30" x 10'	N/A	\$60.00	6 lb	Image Side OUT
SolvoPrint™ Nolite 175 CA	60120	7 mil	30" x 10'	C	\$60.00	8 lb	Image Side OUT
SolvoPrint™ Nolite 360	60128	14 mil	30" x 10'	N/A	\$60.00	7 lb	Image Side OUT

SolvoPrint™ PP Banner 210	60126	8.3 mil	30" x 10'	N/A	\$60.00	9 lb	Image Side OUT
---------------------------	-------	---------	-----------	-----	---------	------	----------------

SolvoPrint™ Easy Panel 220	60109	8.66 mil	30" x 10'	C	\$60.00	8 lb	Image Side OUT
SolvoPrint™ Easy Panel 310 CA	60070	12 mil	30" x 10'	N/A	\$60.00	6 lb	Image Side OUT
SolvoPrint™ Easy Panel 430 CA	60071	17 mil	30" x 10'	N/A	\$60.00	7 lb	Image Side OUT

SolvoPrint™ Paper 240 Satin	60073	9.6 mil	30" x 10'	N/A	\$30.00	6 lb	Image Side OUT
-----------------------------	-------	---------	-----------	-----	---------	------	----------------

SolvoPrint™ Daytona PVC Banner	60115	13 oz / yd2	30" x 10'	N/A	\$60.00	6 lb	Image Side IN
--------------------------------	-------	-------------	-----------	-----	---------	------	---------------

SolvoPrint™ Gotham PVC Blockout	60116	13 oz / yd2	30" x 10'	N/A	\$60.00	6 lb	Image Side IN
---------------------------------	-------	-------------	-----------	-----	---------	------	---------------

conVerd Presented by Neschen

conVerd EnviroScape Mural™ Plus!	6073040	6 mil	30" x 23'	C	\$30.00	5 lb	Image Side OUT
conVerd Blox-Lite™	6073070	10 mil	30" x 23'	C	\$30.00	5 lb	Image Side OUT
	6073080	14 mil	30" x 23'	C	\$30.00	5 lb	Image Side OUT
conVerd Blox-Lite™	6073010	10 mil	30" x 23'	C	\$30.00	7 lb	Image Side OUT
	6073020	14 mil	30" x 23'	C	\$30.00	8 lb	Image Side OUT
conVerd GreenLight™ Plus!	6073030	8 mil	30" x 23'	C	\$30.00	5 lb	Image Side OUT

Pure Color™ Media Line

Pure Color™ Golden Gate Fabric	6318001	8 oz/yd2	20" x 10' (0.50 m x 3 m)	N/A	\$25.00	4 lb	Image Side OUT
Pure Color™ VersaFabric™	6318011	7.1 oz/yd2	20" x 10' (0.50 m x 3m)	N/A	\$25.00	3 lb	Image Side OUT
Pure Color™ Monet Canvas	6318021	10 oz/yd2	20" x 10' (0.50 m x 3 m)	N/A	\$25.00	3 lb	Image Side OUT
Pure Color™ Mambo Fabric	6318041	9 oz/yd2	20" x 10' (0.50 m x 3 m)	N/A	\$25.00	3 lb	Image Side OUT
Pure Color™ Calypso Breeze Satin	6318051	3.5 oz/yd2	20" x 10' (0.50 m x 3 m)	N/A	\$25.00	3 lb	Image Side OUT
Pure Color™ Apollo Flag™	6023890	3.2 oz/yd2	20" x 10' (0.50 m x 3 m)	N/A	\$25.00	3 lb	Image Side OUT

Digital Print Media

Item#	Thickness/Weight	Roll Size	A,B,C	List Price	Roll Weight	Print Side	
SolvoTex™ Artist 310XC	60119	10 oz/yd2	30" x 23' (0.76 m x 7m)	N/A	\$40.00	N/A	Image Side IN
SolvoTex™ Artist Banner Light	2221	5.9oz/yd2	20" x 10' (0.5m x 3m)	C	\$40.00	9 lb	Image Side OUT
SolvoTex™ Artist Premium Light S	60016	5.9oz/yd2	30" x 23' (0.76 m x 7m)	N/A	\$40.00	9 lb	Image Side IN
SolvoTex™ Artist Premium Heavy S	60017	8.5oz/yd2	30" x 23' (0.76 m x 7m)	N/A	\$40.00	10 lb	Image Side IN
SolvoTex™ PES Banner 240	60066	7.1oz/yd2	30" x 23' (0.76 m x 7m)	N/A	\$40.00	9 lb	Image Side IN
SolvoTex™ Cotton Premium Light S	60068	5.9oz/yd2	30" x 23' (0.76 m x 7m)	N/A	\$40.00	9 lb	Image Side IN
SolvoTex™ Cotton Premium Heavy S	60069	9.7 oz/yd2	30" x 23' (0.76 m x 7m)	N/A	\$40.00	9 lb	Image Side IN
SolvoTex™ Digital Sharkstooth	60038	4.1oz/yd2	30" x 23' (0.76 m x 7m)	C	\$40.00	8 lb	Image Side IN
SolvoTex™ No-Lite 335	60036	9.8oz/yd2	30" x 23' (0.76 m x 7m)	N/A	\$40.00	11 lb	Preferred Side IN
SolvoTex™ No-Lite Double Poly	60037	13.2oz/yd2	30" x 23' (0.76 m x 7m)	N/A	\$40.00	11 lb	Preferred Side IN
SolvoTex™ PES Flag Plus 2	60027	3.7oz/yd2	30" x 23' (0.76 m x 7m)	N/A	\$40.00	7 lb	Image Side IN
SolvoTex™ TCS Flag Plus	60026	3.2oz/yd2	30" x 23' (0.76 m x 7m)	N/A	\$40.00	7 lb	Image Side IN
SolvoTex™ TCS Voile Plus	60028	1.3oz/yd2	30" x 23' (0.76 m x 7m)	N/A	\$40.00	6 lb	Image Side IN
SolvoTex™ PES Crystal Plus 1	60032	4.7oz/yd2	30" x 23' (0.76 m x 7m)	N/A	\$40.00	8 lb	Image Side IN
SolvoTex™ Theatre 310 Plus	60081	8.7oz/yd2	30" x 23' (0.76 m x 7m)	N/A	\$40.00	10 lb	Image Side IN
SolvoTex™ TCS 200 Plus 2	60029	5.9oz/yd2	30" x 23' (0.76 m x 7m)	N/A	\$40.00	9 lb	Image Side IN
SolvoTex™ TCS 300 Plus 2	60030	8.8oz/yd2	30" x 23' (0.76 m x 7m)	N/A	\$40.00	10 lb	Image Side IN
SolvoTex™ Samba Light Box	60039	3.8oz/yd2	30" x 23' (0.76 m x 7m)	N/A	\$40.00	7 lb	Image Side IN
SolvoTex™ PVC Premium FL	60010	14.7oz/yd2	30" x 23' (0.76 m x 7m)	N/A	\$25.00	13 lb	Image Side IN
SolvoTex™ PVC Standard FL	60013	11.2oz/yd2	30" x 23' (0.76 m x 7m)	N/A	\$25.00	11 lb	Image Side IN
SolvoTex™ PVC Black Back FL	60012	14.7oz/yd2	30" x 23' (0.76 m x 7m)	N/A	\$25.00	13 lb	Image Side IN
SolvoTex™ PVC Premium BL	60011	14.7oz/yd2	30" x 23' (0.76 m x 7m)	N/A	\$25.00	13 lb	Image Side IN
SolvoTex™ PVC Standard Blockout	60085	15.2oz/yd2	30" x 23' (0.76 m x 7m)	N/A	\$25.00	8 lb	Image Side IN
SolvoTex™ PVC Supreme Mesh	60015	10.3oz/yd2	30" x 23' (0.76 m x 7m)	N/A	\$25.00	9 lb	Image Side IN

Digital Print Media - Dye Sublimation

DirectTex™ Pro-Poplin	60040	6.2 oz/yd2	30" x 23' (0.76 m x 7m)	N/A	\$40.00	9 lb	Image Side IN
DirectTex™ Pro-Poplin Light	60094	5.0 oz/yd2	30" x 23' (0.76 m x 7m)	N/A	\$40.00	N/A	Image Side IN
DirectTex™ Poplin Superior	60093	6 oz/yd2	30" x 23' (0.76 m x 7m)	N/A	\$40.00	N/A	Image Side IN
DirectTex™ Knit Banner Light	60092	4.7 oz/yd2	30" x 23' (0.76 m x 7m)	N/A	\$40.00	N/A	Image Side IN
DirectTex™ PES Flag 110	60051	3.4 oz/yd2	30" x 23' (0.76 m x 7m)	N/A	\$40.00	7 lb	Image Side IN
DirectTex™ Artist Light	60049	5.4 oz/yd2	30" x 23' (0.76 m x 7m)	N/A	\$40.00	8 lb	Image Side IN